

A man with a beard, wearing a yellow hard hat, safety glasses, and a red work shirt, stands in front of a blue industrial structure. He is holding a large, rusty metal rod with both hands. The word "ON" is in yellow and "WORKWEAR" is in white, separated by a yellow horizontal line.

ON WORKWEAR

BARRON

SWITCH YOUR BRAND ON

SWITCH YOUR BRAND **ON**

At **BARRON**, we believe in providing the best products for your brand to tell its story.

That's why when it comes to quality, service and price, we're always able to switch your brand **ON**.

The Philosophy:

ON is up.

ON is right now.

ON is upbeat.

ON is can-do.

ON works.

ON solves.

ON builds.

ON serves.

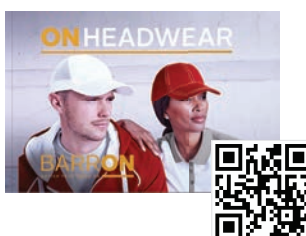
"ON" is your brand.

Switched **ON**.

BARRON. Switch your brand **ON**.

Barron is strictly distributed via authorized distributors namely, promotional and event companies, as well as advertising agencies and independent resellers.

* All brands and logos, other than those of Barron, depicted in this brochure are used for the purpose of visual presentation only and remain the sole property of the relevant companies, organisations to which they belong.



ON INDEX



01 | SERVICE AND BEAUTY

Kelly Tunic	3
Ivy Tunic	4
Camilla Tunic	5
Ladies Claire Jacket	6
Iris Pinafore	7
Daisy Dress	8
Ladies Poly Cotton House Coat	9
Ladies Poly Cotton 3 Piece Set	10
All-Purpose Long / Short Sleeve Lab Coat	11
Ladies And Men's Core Scrub Top	13
Ladies And Men's Core Scrub Pants	13
Theatre Cap And Gifting Items	14
Loafer Clog And Shova Clog	15



02 | CHEFWEAR

Siena Chef Jacket	17
Florence Chef Jacket	18
Ladies Long Sleeve Savona Chef Jacket	19
Mens Short Sleeve Savona Chef Jacket	20
Mens Long Sleeve Savona Chef Jacket	21
Pescara Chef Jacket	22
Roma Chef Jacket	23
Veneto Chef Jacket	24
Figo Utility Top	25
Food Safety Jacket And Pants	26
Chef Baggy Pants	27
Premium Denim Chef Baggy Pants	28
Chef Beanie	29
Chef Beanie With Mesh	29
Mushroom Hat	30
Deli Cap	30
Skull Cap	31
Chef Neckertchief	31
Tapered Apron	32
Bistro Apron	32
Bib Apron	33
Premium Bib Apron	33
Non Woven Apron	34
Non Woven Bib	34
Loafer Clog And Occupational Shoe	35
Shova Clog And Shova Deli Gumboot	35



03 | HIGH VISIBILITY

Signal Vest	37
Contract Mesh Bib	38
Contract Solid Bib	38
Mesh Bib	39
Basic Safety Bib	39
Contract Waistcoat	40
Contract PVC Waistcoat	40
Highway Waistcoat	41
Airfield Waistcoat	41
Surge Golfer	42
Raid Golfer	43
Patrol Golf Shirt	44
Navigator Golf Shirt	45
Transit Long Sleeve Golfer	45
Tailgate Golf Shirt	46
Aviator Golfer	46
150g Poly Cotton Safety T-Shirt With Tape	47
Shaft Safety Shirt	47
Contract Long Sleeve Reflective Vest	48
Contract Sleeveless Reflective Vest	48
Stanley Bodywarmer	49
Force Jacket	50
Quarry Fleece	51
Hawk Jacket	52
Barricade Jacket	53
Venture Padded Jacket	54
Fleet Jacket	55
Contractor 3-In-1 Jacket	56
Blaze 4-In-1 Jacket	57
Convoy Jacket	58
Beacon Jacket	59
Element Rain Suit	60
7 Panel Hazard Cap	61
Safety Sun Hat	61



04 | PROTECTIVE OUTERWEAR

Hi Vis Construction Conti Suit	63
Contract Poly Cotton Conti Suit	64
Contract Poly Cotton Conti Suit With Reflective Tape	64
Budget Poly Cotton Conti Suit	65
Budget Poly Cotton Conti With Reflective Tape	66
Budget Two-Tone Conti Jacket	67
Budget Poly Cotton/Cotton Conti Trouser	67
Budget 100% Cotton Conti Suit	68
Budget 100% Cotton Conti With Reflective Tape	69
Budget Boiler Suit	70
Supreme Poly Cotton Conti Suit	71
Supreme Poly Cotton Conti Suit With Reflective	72
Supreme 100% Cotton Conti Suit	73
D59 Flame And Acid Retardant Conti Jacket	74
D59 Flame And Acid Retardant Conti Trousers	74
D59 Flame And Acid Retardant Boiler Suit	75
Acid Resistant Poly Cotton Conti Suit	76
Premier Conti Jacket With Reflective Tape	77
Premier Conti Trouser With Reflective Tape	77
How To Choose Your Conti Suit	78
Sewing On Reflective Tape	79
Ground Zero Jacket And Pants	80
Food Safety Jacket And Pants	81
Disposable Coverall	82
Multifunctional Lab Coat	82
All-Purpose Long Sleeve Lab Coat	83
All-Purpose Short Sleeve Lab Coat	83
Poly Cotton Dust Coat	84
Ladies Poly Cotton 3 Piece Set	85
Ladies Poly Cotton House Coat	86
Iris Pinafore	86
Daisy Dress	87
Element Rain Suit	88
Contract Rain Suit	89
Contract Rain Coat	89
Contract Reflective Rain Suit	90
Wellington Thermal Top And Pants	91



05 | SECURITY

Security Jersey	93
Contract Combat Shirt And Trousers	94
Fidelity Combat Shirt	95
Fidelity Combat Trouser	95
Pilot Shirt	96
Winston Trousers	96
Castro Cap And Trigger Cap	97
Ladies Basic Poly Cotton Blouse	98
Ladies Basic Cardigan	98
Ladies Statement Skirt	98
Barricade Jacket	99
Beacon Jacket	99
Protector Boot And Web Belt	100
Uniform Tie	101
Epaulettes	101



06 | FOOTWEAR

Optimus Mining Boot	104
Defender Safety Boot	105
Armour Safety Shoe	105
Crusader Safety Shoe	106
Canvas Lace Up Shoe	106
Protector Boot	107
Chelsea Safety Boot	107
Occupational Shoe	108
Loafer Clog	108
Shova Clog	109
Shova Deli Gumboot	109
Shosholoz Mining Gumboot	110
Shova General Purpose Gumboot	111
Stimela Xp Gumboot	111
Duty Sock	112
Commander Sock	112
Drift Mining Sock	113
Security Sock	113



07 | ACCESSORIES

Hard Hats	115
Chin Strap	115
Dust Masks	116
Work Wear Belt	116
Red PVC Knit Wrist Gloves	117
Uniform Tie	117
Epaulettes	117
Head Lamp With 8 Cob Led Lights	118
Waterproof Led Flashlight	118
24Pc Toolkit	118
2 In 1 Flashlight And Lamp	118
Snug Quick Charge 3.0 Power Bank	119
Snug 4 Port Usb Home Charger	119
Snug Qi Wireless Charging Power Bank	119
High Vis Backpack	120
Tourista Backpack	120
Trailwalker 2 Backpack	120
Anti-Theft Tech Backpack	120
First Aid Kits	121



08 | BOTTOMS

Workwear Jeans	123
Mens Original Jeans	124
Mens Retro Jeans	124
Bundu Shorts	125
Safari Shorts	126
Rogue Shorts	127
Brixton Pants	127
Cargo Pants	128
Indestructible Corporal Pants	128
Poly Cotton Chino	129
Cotton Chino	129
5 Pocket Chino	130
Winston Trousers	130
Men's Statement Classic Pants	131
Ladies Statement Skirt	131
Ladies Statement Stretch Pants	132
Ladies Stretch Chino	132
Ladies Amber Pants	133
Ladies Eve Stretch Jeans	133



09 | OUTDOOR AND LEISURE

Indestructible Sniper Bush Shirt	135
Indestructible Target Body Warmer	136
Indestructible Bullet Jacket	137
6 Panel Buffalo Cap And Impala Visor	138
Indestructible Drill Jacket	139
Indestructible Alliance Fleece Jacket	140
Indestructible Ambush Shirt	141
Indestructible Tank Golfer	142
Mens Tracker Shirt	143
Ladies Tracker Shirt	143
Mens Outback Shirt	144
Ladies Outback Blouse	144
Mens Plain Bush Shirt	145
Ladies Plain Bush Shirt	145
Mens Bush Shirt Long Sleeve	146
Ladies Bush Shirt Long Sleeve	146
Two Tone Bush Shirt	147
Mens Trail Shirt	148
Delta Shirt	149
Fishing Jacket	149
145g Crew Neck T-Shirt	150
145g Long Sleeve T-Shirt	150
135g Poly Long Sleeve T-Shirt	151
135g Poly Short Sleeve T-Shirt	151
Mens 175g Piquet Knit Golf Shirt	152
Ladies 175g Piquet Knit Golf Shirt	152

A woman with blonde hair tied in a bun, wearing a dark blue short-sleeved scrub top, is looking down at a surface. She is wearing a gold watch on her left wrist. The background shows a clinical or beauty setting with shelves holding various items, including a white container labeled 'skin' and some papers.

ON

SERVICE & BEAUTY

In industries where the work can get a little messy, cleanliness is vital and you need Workwear to portray a lasting impression. Our range has everything you need to keep the dirt off, and Switch your brand **ON**.



TU-KEL - KELLY TUNIC

Features: Short sleeves • Side slits • Front and back waist darts make this tunic stand out • Front patch pockets • Welt pocket on the chest
• Tonal buttons on centre front

Fabrication: 175g 100% Polyester

Branding:

E SP HP

Kelly Tunic - Regular fit

Sizes	XS	S	M	L	XL	2XL	3XL	4XL	5XL
1/2 Chest (cm)	41	45	49	53	57	61	65	69	73



Navy



Black



Khaki



White



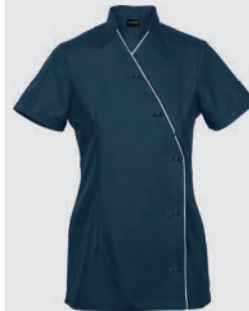
White/Navy



Black/Red



Black/White



Navy/White

**TU-IVY - IVY TUNIC**

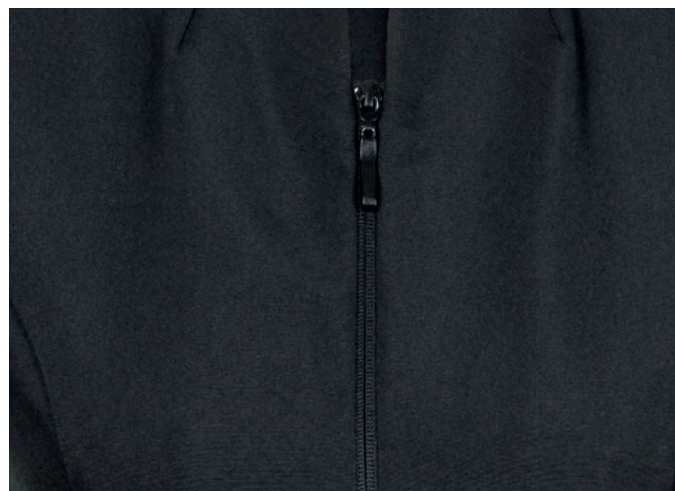
Features: Short sleeves • Asymmetrical tunic • Mandarin collar
 • Buttons and side slits • Front and back waist darts

Fabrication: 175g 100% Polyester

Branding:

E **SP** **HP**

Ivy Tunic - Regular Fit									
Sizes	XS	S	M	L	XL	2XL	3XL	4XL	5XL
1/2 Chest (cm)	41	45	49	53	57	61	65	69	73



Black



Navy



Silver



White

TU-CAM - CAMILLA TUNIC

Features: Short sleeves • Feminine cut with front princess panels • Shaped waist • Side slits
• Back waist darts • Darts on the neckline • Side patch pockets on the hem • Open end nylon zip

Fabrication: Polyester stretch fabric

Branding:

E SP HP

Camilla Tunic - Regular Fit									
Sizes	XS	S	M	L	XL	2XL	3XL	4XL	5XL
1/2 Chest (cm)	41	45	49	53	57	61	65	69	73



Navy



Black



CL-CT - LADIES CLAIRE JACKET

Features: Princess panels • Back waist darts • Feminine fit • Hook and bar closure at centre front • V-shaped neckline • Pockets at the hem • Side slits • Perfect for any body shape • Armholes finished off with inner self-fabric flat binding

Fabrication: 175g 100% Polyester

Branding:

E

Ladies Claire Jacket - Tapered Fit (While stocks last)

Sizes	XS	S	M	L	XL	2XL	3XL	4XL	5XL
1/2 Chest (cm)	41	45	49	53	57	61	65	69	73

PIN-IR - IRIS PINAFORE

Features: Perfect pinafore for a variety of industries • Adjustable waist tabs • Self-fabric binding on the edges • Kangaroo pocket divided into multiple compartments

Fabrication: 210g 80/20 Poly cotton

Branding:

E **SP** **HP**

Iris Pinafore - Regular Fit				
Sizes	S/M	L/XL	2XL/3XL	4XL/5XL
1/2 Chest (cm)	38	48	58	68



Black



Navy



Khaki



White



DS-DAI - DAISY DRESS

Features: Notches on neckline • Grown on button stand • Princess panels • Slanted pockets • Comfortable for any work • Belt loop and button on the shoulders for detachable epaulettes • Epaulettes not supplied • Contrast piping on the neck, sleeves and pockets

Fabrication: 175g 100% Polyester

Branding:

E **SP** **HP**

Daisy Dress - Regular Fit									
Sizes	XS	S	M	L	XL	2XL	3XL	4XL	5XL
1/2 Chest (cm)	41	45	49	53	57	61	65	69	73



Black/White



Navy/White



Khaki/Black



White/Navy



CS-HOU - LADIES POLY COTTON HOUSE COAT

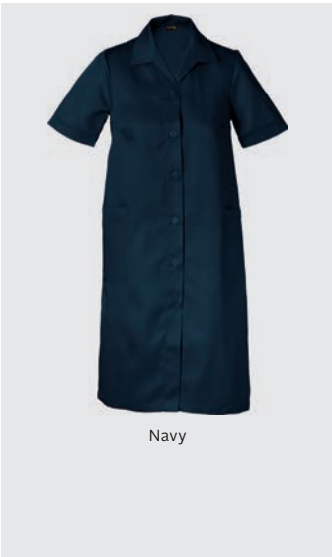
Features: Bust darts • Perfect outerwear to protect ladies' clothes while cleaning or cooking • Grown on button stand with buttons • Two front patch pockets
• Short sleeves with a cuff
Fabrication: 210g 80/20 Poly Cotton
Branding:

E

SP

HP

Ladies Poly Cotton House Coat - Regular Fit									
Sizes	XS	S	M	L	XL	2XL	3XL	4XL	5XL
1/2 Chest (cm)	43	47	51	55	59	63	67	71	75





Royal/White



Navy/White



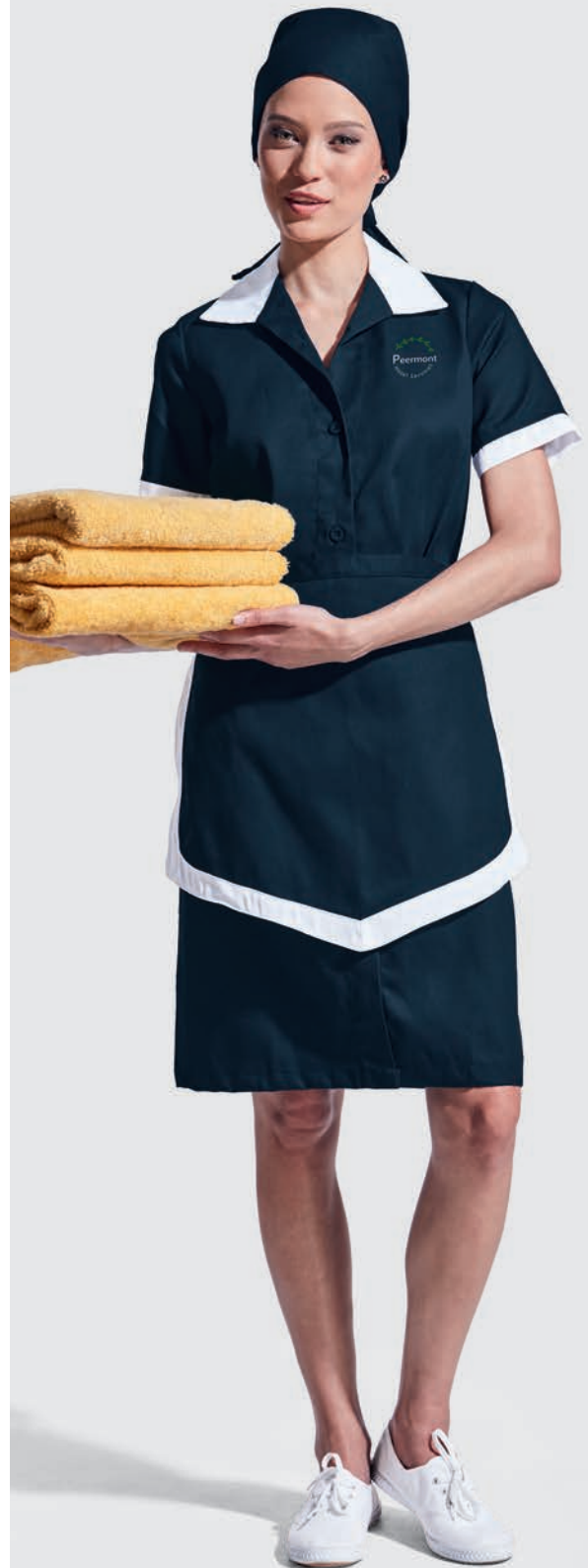
Emerald/White



Khaki/Animal Print



Black/White

**CS-SET - LADIES POLY COTTON 3 PIECE SET**

Features: Bust darts • Three piece house coat set • Set includes a dress, apron and head scarf • The dress is adapted from our new Ladies Poly Cotton House Coat
 • Contrast revere collar • Grown on button stand with buttons • Two front patch pockets
 • Two-tone apron and head scarf • Emerald/White and Royal/White are new colourways
Fabrication: 210g 80/20 Poly Cotton

Branding:



Ladies Poly Cotton 3 Piece Set - Regular Fit									
Sizes	XS	S	M	L	XL	2XL	3XL	4XL	5XL
1/2 Chest (cm)	43	47	51	55	59	63	67	71	75



Long Sleeve



Short Sleeve



LAB-ALL - ALL-PURPOSE SHORT AND LONG SLEEVE LAB COAT

Features: Front pockets at hem • Unisex lab coat • Perfect for any profession
 • Concealed front opening with press studs • One piece collar • Chest pocket with pen slot and flap
 • Back hem vent • Long and short sleeves

Fabrication: 210g Poly Cotton

Branding:

E SP HP

NEW

All-Purpose Lab coat - Tapered fit									
Sizes	XS	S	M	L	XL	2XL	3XL	4XL	5XL
1/2 Chest (cm)	45	50	55	60	65	70	75	80	85





SC-LCT - LADIES CORE SCRUB TOP

Features: Front V-neck • Long side slits • Front patch pockets • Chest pocket with a pen slot • Princess panels • Set sleeves
Fabrication: 180g Poly Cotton

Branding:

E **SP** **HP**

Ladies Core Scrub Top - Comfort Fit									
Sizes	XS	S	M	L	XL	2XL	3XL	4XL	5XL
1/2 Chest (cm)	45	49	53	57	61	65	69	73	77



Navy



Green



Dusk Blue

SC-MCT - MENS CORE SCRUB TOP

Features: Front V-neck • Long side slits • Front patch pockets • Chest pocket with a pen slot • Set sleeves
Fabrication: 180g Poly Cotton

Branding:

E **SP** **HP**

Mens Core Scrub Top - Comfort Fit								
Sizes	S	M	L	XL	2XL	3XL	4XL	5XL
1/2 Chest (cm)	55	60	65	70	75	80	85	90



Navy



Green



Dusk Blue

SC-LCP - LADIES CORE SCRUB PANTS

Features: Comfortable pants to wear around the hospital • Elasticated waistband with draw cord • Front slanted pockets • Single edge stitching on front and back rise and inleg
Fabrication: 180g Poly Cotton

Branding:

E **SP** **HP**

Ladies Core Scrub Pants - Regular Fit									
Sizes	XS	S	M	L	XL	2XL	3XL	4XL	5XL
Waist (in)	26/28	30/32	34	36/38	40/42	44	46/48	50	52/54
Waist (cm)	66-73	74-81	82-89	90-97	98-105	106-113	114-121	122-129	130-138



Navy



Green



Dusk Blue

SC-MCP - MENS CORE SCRUB PANTS

Features: Comfortable pants to wear around the hospital • Elasticated waistband with draw cord • Front slanted pockets • Single edge stitching on front and back rise and inleg
Fabrication: 180g Poly Cotton

Branding:

E **SP** **HP**

Mens Core Scrub Pants - Regular Fit								
Sizes	S	M	L	XL	2XL	3XL	4XL	5XL
Waist (in)	30/32	34	36/38	40/42	44	46/48	50	52/54
Waist (cm)	74-81	82-89	90-97	98-105	106-113	114-121	122-129	130-138



Navy



Green



Dusk Blue

SC-TC - THEATRE CAP

Features: Self-fabric ties on back • One size fits all

Fabrication: 180g Poly Cotton

Branding:



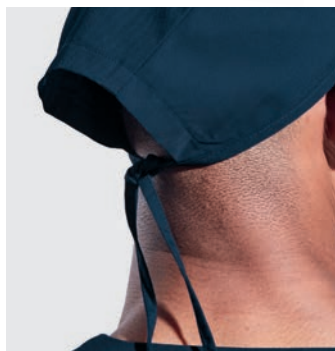
Green



Navy



Dusk Blue



BH2636 - THERMOMETER IN TRANSPARENT BOX

Features: Size: 12.3 x 1.8 x 1cm • Plastic medical thermometer (°C) • Supplied in a transparent plastic box • Batteries included

Branding:



Neutral

BH4492 - SQUARE 4 COMPARTMENT PILL HOLDER

Features: Size: 6 x 6 x 1.8cm • Square translucent plastic pill holder • 4 Compartments

Branding:



BH1110 - 10ML HAND SANITISER SPRAY

Features: Size: 1.6 x 14cm • Hand sanitiser spray • 10ml Plastic, transparent tube • Coloured cap • Available in Red, Pale Green, Blue and Neutral

Branding:



Black

BB0022 - EXECUTIVE MESSENGER BAG

Features: Size: 48 x 39 x 17.2cm • Material: 600D/420D • Durable 600D exterior • Easy access organiser • Zippered inside pocket with divider • Front flap secured with 2 buckles • Zippered mesh pocket under flap • Adjustable shoulder strap • Riveted handle • Media hole

Branding:





SHOV-CLOG - BARRON SHOVA CLOG (BOX OF 5)

Features: CE EN 20347: 2012 OB FO SRA CLASS II approved • Made from Virgin PVC • Unisex PVC clog best for kitchens, hospitals and gardens • Anti-bacterial inner sock • Slip resistant inner sole • Blood & fat/Oil & acid resistant • 25 Part nitrile content sole • Sole design with extra deep tread lugs to provide excellent grip on all terrain • Wider foot shape for more comfort • The foot shape is compliant within SABS parameters • REACH compliant • Sold in a box of 5

BARRON Shova Clog	
Sizes	4 - 13



White/Grey



DELI-GUM - BARRON SHOVA DELI GUMBOOT (BOX OF 5)

Features: CE EN 20347: 2012 OB FO SRA CLASS II approved • Wider foot shape for more comfort • The foot shape is compliant within SABS parameters • Ankle cups provides more support and eliminates ankle friction • Ankle support reinforces the achilles tendon area for additional support • Sole design with extra deep tread lugs to provide excellent grip on all terrain • Lower top band for ease while working • Sole foot bed with built-in foot shape • Anti-bacterial inner sock • Blood & fat/Oil & acid resistant • 25 Part nitrile content sole • Made from Virgin PVC • REACH compliant • Sold in a box of 5

BARRON Shova Deli Gumboot	
Sizes	4 - 13



White/Grey

SF009 - BARRON LOAFER CLOG

Features: Slip on unisex clog design • Perfect for hospitality and medical field • Shock absorbent insole • Slip resistant on dry surfaces • Water resistant • Removable inner sole • Upper and outer sole - PVC • Insole - PU with Polyester Mesh • Thicker inner sole for added comfort

Branding:



NEW

BARRON Loafer Clog	
Sizes	4 - 13



Black





ON

CHEFWEAR

Switch your brand **ON** when you switch your oven on. From prep to plating up at kitchen to the table, our range has got you covered, and there's just something about an apron or a chef's jacket that lets people know you can stand the heat.



White/Black



Black/White



BC-SIE - SIENA CHEF JACKET

Features: Front and Back side mesh panels for added ventilation
 • Assymetrical front with concealed zip opening • Turn up cuffs with contrast piping detail • Welted chest pocket • Thermometer sleeve pocket
 • Contrast piping at front and back panels for a classic look

Fabrication: 180g 65/35 Poly Cotton

Branding:

E

BARRON Chef - Tapered Fit

Sizes	XS	S	M	L	XL	2XL	3XL	4XL	5XL
1/2 Chest (cm)	45	50	55	60	65	70	75	80	85





Black



White



BC-FLO - FLORENCE CHEF JACKET

Features: Long sleeve style • Bar-tacked on all pressure points
• Concealed front opening with press studs • Turned-back cuffs
• Welted chest pocket • Pen/ Thermometer sleeve pocket

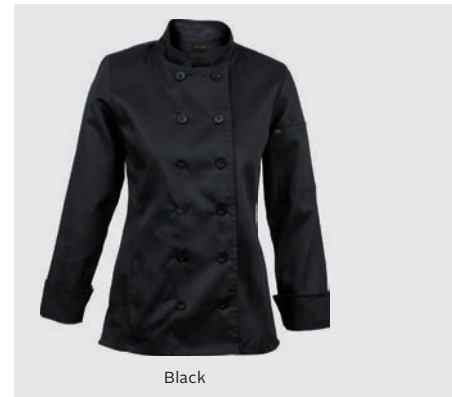
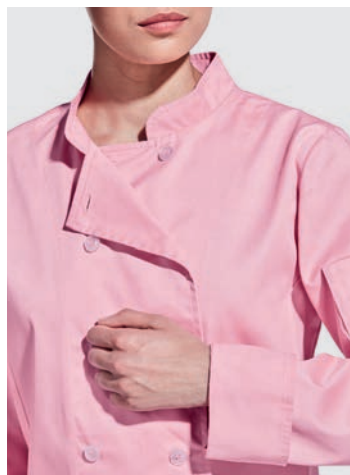
Fabrication: 190g 80/20 Poly Cotton twill fabric

Branding:

E **SP** **HP**

NEW

BARRON Chef - Tapered Fit									
Size (cm)	XS	S	M	L	XL	2XL	3XL	4XL	5XL
1/2 Chest	45	50	55	60	65	70	75	80	85



LBC-SAV - LADIES LONG SLEEVE SAVONA CHEF JACKET

Features: Double breasted front opening • Turn up cuffs with bartack detail
 • Front princess seams for a more feminine fit • Thermometer sleeve pocket
 • Single top-stitched armholes and shoulder seams for added durability
 • Bartacks at stress points • Pink is a new colourway.

Fabrication: 190g 80/20 Poly Cotton fabric

Branding:

E

BARRON Chef - Ladies Fit

Size (cm)	XS	S	M	L	XL	2XL	3XL	4XL	5XL
1/2 Chest	45	49	53	57	61	65	69	73	77



Red



Lime



Grey



Black



White

BC-SAV - MENS SHORT SLEEVE SAVONA CHEF JACKET

- Features:** Bar-tacked on all pressure points • Double breasted chef jacket
 • Turned-up cuffs • Welted chest pocket • Thermometer sleeve pocket
 • Single top-stitched armholes and shoulder seams
 • Grey is a new colourway

Fabrication: 190g 80/20 Poly Cotton fabric

Branding:

E

BARRON Chef - Tapered Fit									
Sizes	XS	S	M	L	XL	2XL	3XL	4XL	5XL
1/2 Chest (cm)	45	50	55	60	65	70	75	80	85





Lime



Red



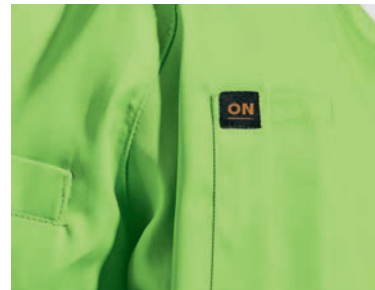
Grey



Black



White



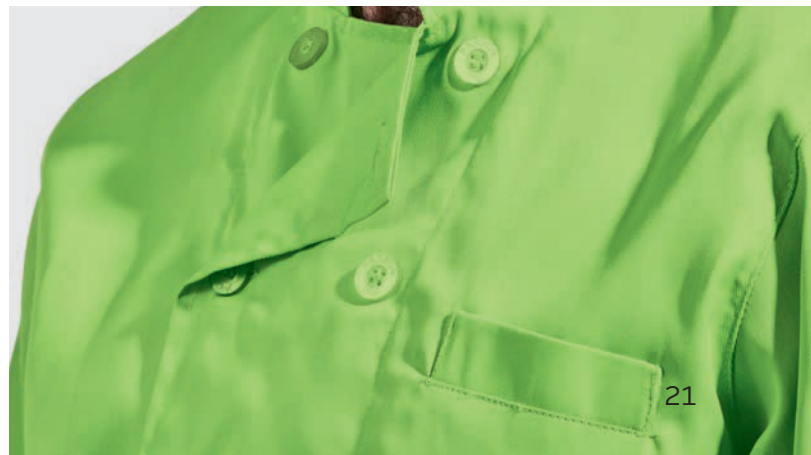
BC-SAV - MENS LONG SLEEVE SAVONA CHEF JACKET

- Features:** Bar-tacked on all pressure points • Double breasted chef jacket
 • Turned-up cuffs • Welted chest pocket • Thermometer sleeve pocket
 • Single top-stitched armholes and shoulder seams
 • Grey is a new colourway
Fabrication: 190g 80/20 Poly Cotton fabric
Branding:

E

BARRON Chef - Tapered Fit

Sizes	XS	S	M	L	XL	2XL	3XL	4XL	5XL
1/2 Chest (cm)	45	50	55	60	65	70	75	80	85





White with white buttons



White with black buttons



BC-PES - PESCARA CHEF JACKET

Features: Crossover chest design • Pop-in buttons • Thermometer pocket on the sleeve • French cuffs and double top-stitching • Shoulder seams and armholes • Available only in long sleeve • Welted chest pocket with bar tacks

Fabrication: 225g 65/35 Poly Cotton fabric

Branding:

E

BARRON Chef - Tapered Fit									
Sizes	XS	S	M	L	XL	2XL	3XL	4XL	5XL
$\frac{1}{2}$ Chest (cm)	45	50	55	60	65	70	75	80	85



Grey/Black



White/Black



Red/Black



BC-ROM - ROMA CHEF JACKET

Features: Available only in long sleeves • Welted chest pocket with contrast piping • Vibrant two-tone jacket design • Crossover neckline • Concealed stainless steel studs • Back mesh panel for added comfort and ventilation • Thermometer sleeve pocket • Contrast shoulder panels • Two-piece sleeves with turn-up cuffs

Fabrication: 225g 65/35 Poly Cotton fabric

Branding:

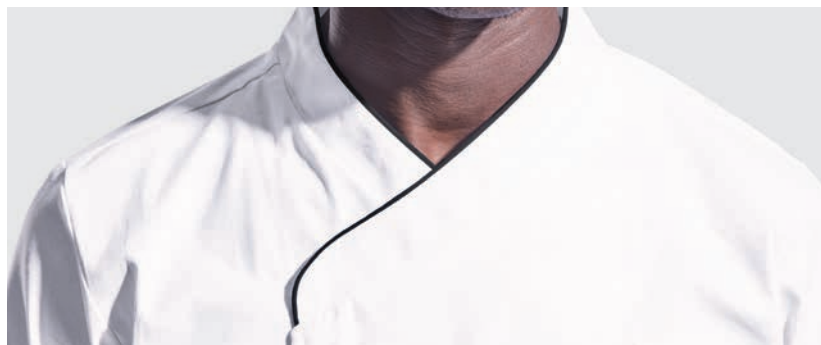
E

BARRON Chef - Tapered Fit									
Sizes	XS	S	M	L	XL	2XL	3XL	4XL	5XL
1/2 Chest (cm)	45	50	55	60	65	70	75	80	85





White



BC-VEN - VENETO CHEF JACKET

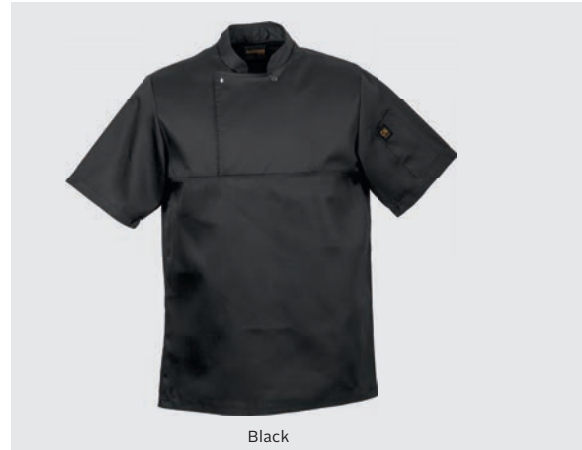
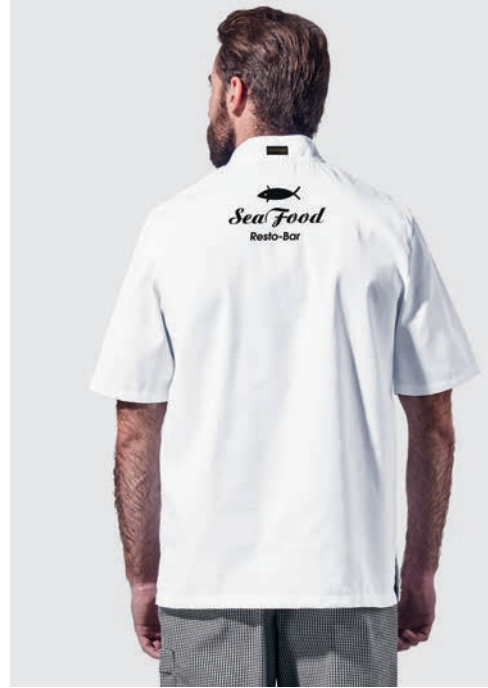
Features: Bar-tacked on all pressure points • Thermometer sleeve pocket • Crossover neckline • Concealed stainless steel studs
• Contrast piping • Classic look • Weltd chest pocket
• Mandarin wrap collar • French cuffs

Fabrication: 220g 100% Cotton fabric

Branding:

E

BARRON Chef - Tapered Fit									
Sizes	XS	S	M	L	XL	2XL	3XL	4XL	5XL
1/2 Chest (cm)	45	50	55	60	65	70	75	80	85



BC-UT - FIGO UTILITY TOP

Features: Available only in short sleeves • Side slits • Double breasted front panel and yoke • Thermometer sleeve pocket • Bar-tacking and single top-stitched armholes and shoulders • A basic that all kitchens need

Fabrication: 190g 80/20 Poly Cotton fabric

Branding:

E

BARRON Chef - Tapered Fit									
Sizes	XS	S	M	L	XL	2XL	3XL	4XL	5XL
1/2 Chest (cm)	45	50	55	60	65	70	75	80	85



BC-FSJ - BARRON FOOD SAFETY JACKET

Features: Available only in long sleeves • Bar-tacking on all pressure points • Food processing jacket • Cut-away neckline • Front yoke • Single top-stitching throughout • ½ Elasticated cuffs • Inner chest pocket with pen slot • Side slits
Fabrication: 225g 65/35 Poly Cotton fabric

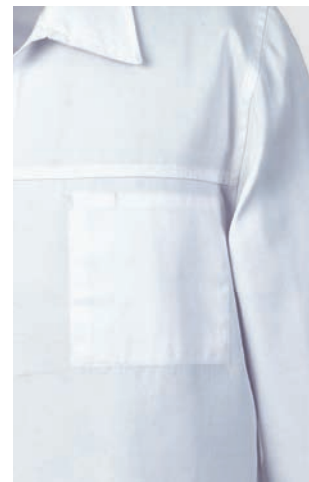
Branding:

E **SP** **HP**

BARRON Chef - Tapered Fit									
Sizes	XS	S	M	L	XL	2XL	3XL	4XL	5XL
½ Chest (cm)	45	50	55	60	65	70	75	80	85



White



BC-FSP - BARRON FOOD SAFETY PANTS

Features: Bar-tacking on all pressure points • Elasticated waistband with draw cord for a comfortable fit • Back pocket • Double top-stitched seams for added durability
Fabrication: 225g 65/35 Poly Cotton fabric

Branding:

E **SP** **HP**



White



Baggy Pants - Regular Fit									
Sizes	XS	S	M	L	XL	2XL	3XL	4XL	5XL
Waist (Inches)	26/28	30/32	34	36/ 38	40/42	44	46/48	50	52/54
½ Waist (cm)	66-73	74-81	82-89	90-97	98-105	106-113	114-121	122-129	130-138



Navy/White Check



Black/White Check



Black



Grey

BC-BAG - CHEF BAGGY PANTS

Features: Bar-tacked pockets for added durability • Comfortable baggy pants • Elasticated waist with draw cord
• Ideal for the kitchen • Two side pockets • One back pocket • Monza side pocket on the thigh • Grey is a new colourway

Fabrication: 200g 65/35 Poly Cotton fabric

Branding:

E

Baggy Pants - Regular Fit

Sizes	XS	S	M	L	XL	2XL	3XL	4XL	5XL
Waist (Inches)	26/28	30/32	34	36/ 38	40/42	44	46/48	50	52/54
Waist (cm)	66-73	74-81	82-89	90-97	98-105	106-113	114-121	122-129	130-138



Dark Denim



BC-PRE - PREMIUM DENIM CHEF BAGGY PANTS

Features: Bar-tacked stress points for added durability • Elasticated waist and draw cord • Ideal for the kitchen • Two side hip pockets • One back pocket
Fabrication: 6oz 100% Cotton lightweight denim

Branding:

E **SP** **HP**

NEW

Baggy Pants - Regular Fit									
Sizes	XS	S	M	L	XL	2XL	3XL	4XL	5XL
Waist (Inches)	26/28	30/32	34	36/ 38	40/42	44	46/48	50	52/54
Waist (cm)	66-73	74-81	82-89	90-97	98-105	106-113	114-121	122-129	130-138

BC-B - CHEF BEANIE

Features: Adjustable velcro tab
Fabrication: 65/35 Poly Cotton fabric
Branding:

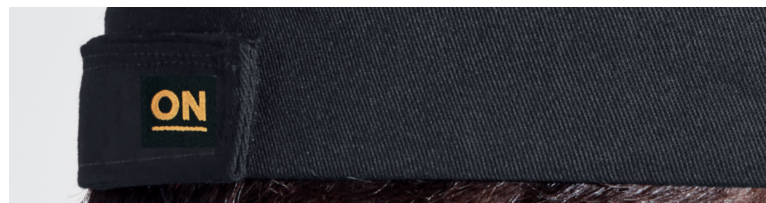
E **SP** **HP**



Black



White

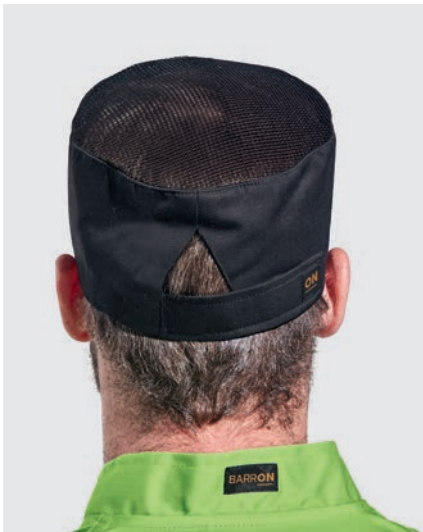


BC-BM - CHEF BEANIE WITH MESH

Features: Adjustable velcro back tab • Mesh top panel for ventilation
Fabrication: 200g 65/35 Poly Cotton fabric
Branding:

NEW

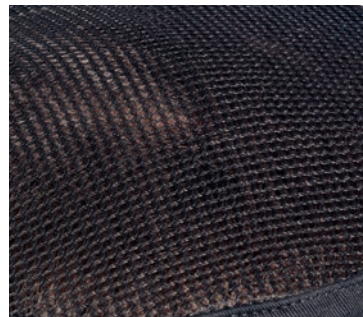
E **SP** **HP**



Black



White



DC - DELI CAP

Features: Knife pleats at front of cap • Peak front with hard fusing

• Elasticated back rim for comfortable fit

Fabric: 65/35 Poly Cotton fabric

Branding:

HP



White



Black



BC-M - CHEF MUSHROOM HAT

Features: Adjustable velcro tab

Fabrication: 65/35 Poly Cotton fabric

Branding:

E

SP

HP



White



Black



BC-S - CHEF SKULL CAP

Features:

Twin needle top-stitching • Mesh side panel for cool and comfortable wear

Fabric: 190g 80/20 Poly Cotton fabric

Branding:

E **SP** **HP**



Black/Black



Lime/Black



Red/Black



White/White

BC - NEC - CHEF NECKERCHIEF

Features: One size fits all

Fabrication: 150g 65/35 Poly Cotton fabric

Branding:

E **SP** **HP**

Neckerchief

Sizes (cm) 104 X 68



White



A-BI - BISTRO APRON

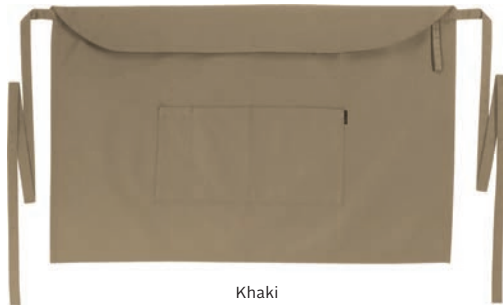
Features: Double front pocket with pen slot • One size fits all • Cloth loop • Perfect for restaurants and coffee shops • Multi-function pocket • Khaki is a new colourway

Fabrication: 200g Poly Cotton Twill

Branding:

E **SP** **HP**

Bistro Apron	
Length (cm)	50



Khaki



Black



Navy



Red



Grey



Lime



White



A-T - TAPERED APRON

Features: Bar-tacked on all pressure points • Easy access angled pocket • Looped towel holder • Front flap • Tapered for a comfortable fit • Ideal for any kitchen

Fabrication: 200g Poly Cotton Twill fabric

Branding:

E **SP** **HP**

Tapered Apron	
Length (cm)	80



Black



White



A-PR - PREMIUM BIB APRON

Features: A premium apron design • Contrast top-stitching detail • Pocket with two compartments and pen slot • Pockets with rivet detail • Adjustable strap and buckle
• Straps loop through metal eyelets • One size fits all

Fabrication: 10oz 100% Cotton denim

Branding:

E **SP** **HP**

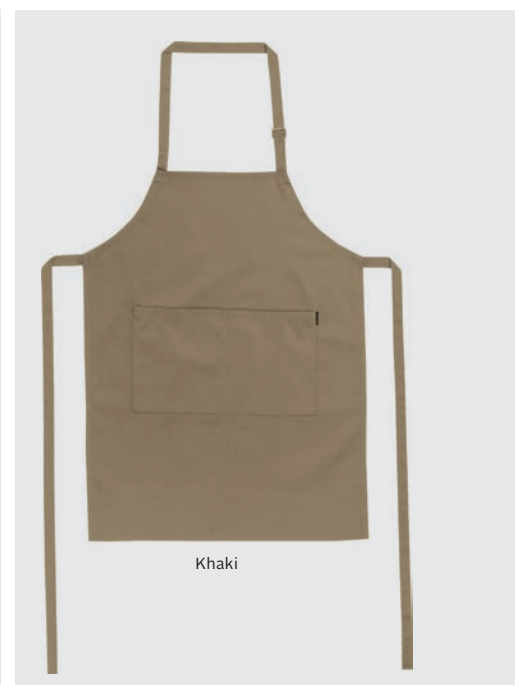
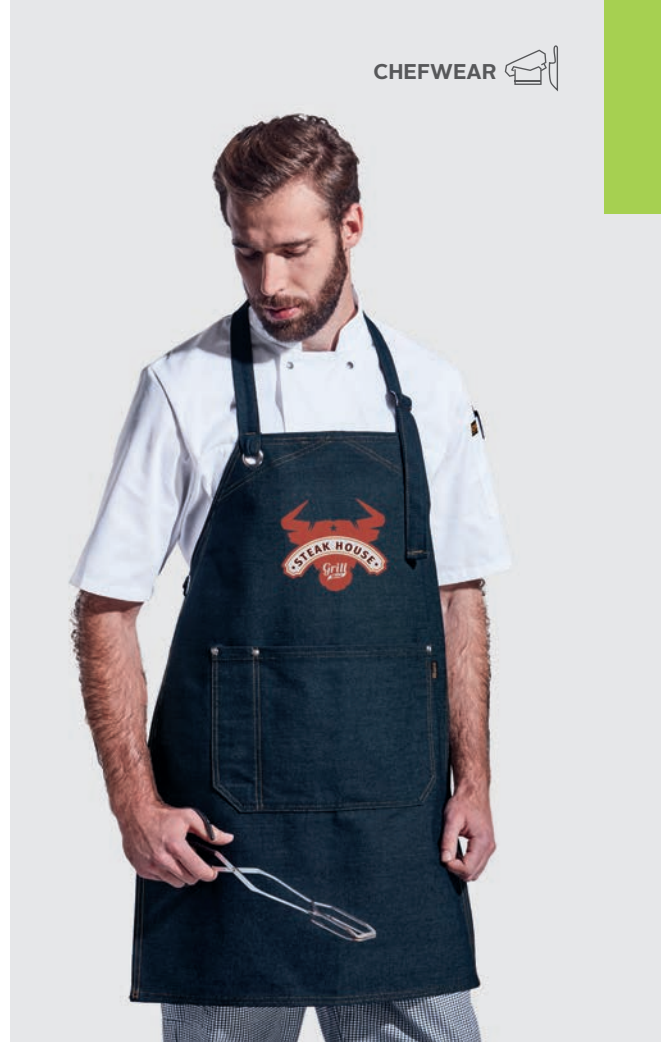
NEW

Premium Bib Apron

Length (cm) 78



Denim



Khaki

A-B - BIB APRON

Features: Two side pockets • One size fits all • A hospitality industry fixture
• Also great for domestic and promotional use • Two pocket compartments
• Khaki is a new colourway
Fabrication: 200g Poly Cotton Twill

Branding:

E **SP** **HP**

Bib Apron

Length (cm) 78

BH0149 - NON WOVEN APRON

Features: One pocket • One size fits all • Adjustable neck ties • Adjustable body ties
• A hospitality industry fixture • Also great for domestic and promotional use

Fabrication: 80g Non Woven Polyester fabric

Branding:

E **SP**

Non Woven Apron	
Length (cm)	73



BH0148 - NON WOVEN BIB

Features: One size fits all • Adjustable body ties
• A hospitality industry fixture • Also great for domestic and promotional use

Fabric: Non Woven Polyester fabric

Branding:

E **SP** **HP**

Non Woven Bib	
Length (cm)	40 X 60





White/Grey

DELI-GUM - BARRON SHOVA DELI GUMBOOT (BOX OF 5)

Features: CE EN 20347: 2012 OB FO SRA CLASS II approved

- Wider foot shape for more comfort
- The foot shape is compliant within SABS parameters
- Ankle cups provides more support and eliminates ankle friction
- Ankle support reinforces the achilles tendon area for additional support
- Sole design with extra deep tread lugs to provide excellent grip on all terrain
- Lower top band for ease while working
- Sole foot bed with built-in foot shape
- Anti-bacterial inner sock
- Blood & fat/Oil & acid resistant
- 25 Part nitrile content sole
- Made from virgin PVC
- REACH compliant
- Sold in a box of 5

BARRON Shova Deli Gumboot	
Sizes	4 - 13



White/Grey



SHOV-CLOG - BARRON SHOVA CLOG (BOX OF 5)

Features: CE EN 20347: 2012 OB FO SRA CLASS II approved

- Made from virgin PVC
- Unisex PVC clog best for kitchens, hospitals and gardens
- Anti-bacterial inner sock
- Slip resistant inner sole
- Blood & fat/Oil & acid resistant
- 25 Part nitrile content sole
- Sole design with extra deep tread lugs to provide excellent grip on all terrain
- Wider foot shape for more comfort
- The foot shape is compliant within SABS parameters
- REACH compliant
- Sold in a box of 5

BARRON Shova Clog	
Sizes	4 - 13



Black



SF007 - BARRON OCCUPATIONAL SHOE

Features: CE ISO20347: 2011 approved occupational lightweight shoe

- Single density PU sole
- Water resistant
- Anti-static
- Anti-slip
- Anti-bacterial insole
- Oil resistant
- Unisex
- Perfect for chefs, hospitals and front-line staff
- Elasticated side panel
- Microfiber upper and higher heel

BARRON Occupational Shoe	
Sizes	2 - 13



Black



SF009 - BARRON LOAFER CLOG

Features: Slip on unisex clog design

- Perfect for hospitality and medical field
- Shock absorbent insole
- Slip resistant on dry surfaces
- Water resistant
- Removable inner sole
- Upper and outer sole - PVC
- Insole - PU with Polyester Mesh
- Thicker inner sole for added comfort

Branding:

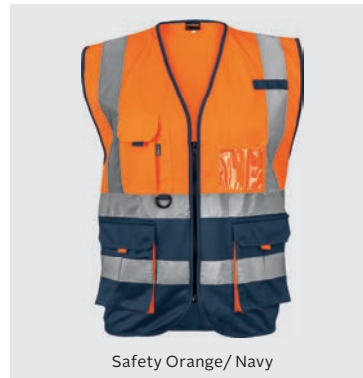


BARRON Loafer Clog	
Sizes	4 - 13



ON HIGH-VISIBILITY WORKWEAR

With our High-visibility Workwear, you can Switch your brand **ON** in more ways than one. We have a diverse range of high-visibility golf shirts, jackets and T-shirts to keep you in sight.



WC-SIG - SIGNAL VEST

Features: Two tone utility style waistcoat • Shoulder and waist reflective tape
• Cellphone and pen pocket • ID pocket with velcro closure • Lower bellow pockets

Fabrication: 120g 100% Polyester fabric

Branding:

E **SP** **HP**

NEW

Waistcoat - Regular fit								
Sizes	S	M	L	XL	2XL	3XL	4XL	5XL
1/2 Chest (cm)	57	59.5	62	64.5	67	70	73	76



CON-MESH - CONTRACT MESH BIB

Features: Reflective tape • ISO 20471:2013 approved
Fabrication: 100% Polyester
Branding:
HP

Contractor Mesh Bib	
Size (cm)	35 x 53



Safety Yellow



Safety Orange

CON-SOLID - CONTRACT SOLID BIB

Features: Reflective tape • ISO 20471:2013 approved
Fabrication: 120g Polyester
Branding:
SP HP

Contractor Mesh Bib	
Size (cm)	35 x 53



Safety Orange



Safety Yellow

B-MB - MESH BIB

Features: Reflective tape • Adjustable straps

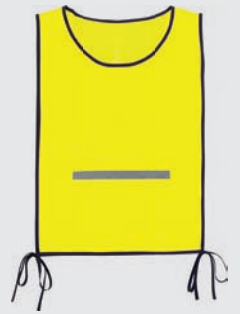
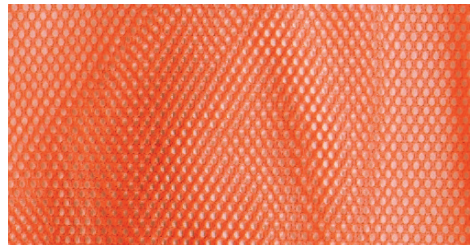
Fabrication: 100% Polyester

Branding:

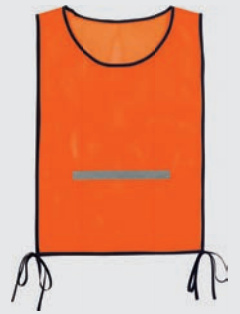
HP

Contractor Mesh Bib

Size (cm) 40 x 60



Safety Yellow



Safety Orange

B-BAS - BASIC SAFETY BIB

Features: Reflective tape • Adjustable straps

Fabrication: 100% Polyester

Branding:

SP

HP

Contractor Mesh Bib

Size (cm) 40 x 60



Safety Orange



Safety Yellow

CON-WPVC - CONTRACT PVC WAISTCOAT

Features: Contrast binding on neckline, armholes and hem • PVC Reflective tape
• ID Pocket • Snap closure on chest

Fabrication: 100% Polyester

Branding:

SP HP

Waistcoat - Budget Sizing								
Sizes	S	M	L	XL	2XL	3XL	4XL	5XL
½ Chest (cm)	54	56	58	60	62	64	66	68



Safety Yellow



CON-WAIST - CONTRACT WAISTCOAT

Features: High-visibility waistcoat • Reflective tape • ID pocket • Full zip front • Tonal self-fabric binding • ISO 20471:2013 approved

Fabrication: 120g 100% Polyester

Branding:

SP HP

Waistcoat - Budget Sizing								
Sizes	S	M	L	XL	2XL	3XL	4XL	5XL
½ Chest (cm)	54	56	58	60	62	64	66	68



Safety Orange



Safety Yellow



WC-HIG - HIGHWAY WAISTCOAT

Features: Lightweight waistcoat with ID pocket • Full zip front • Front and back reflective tape

Fabrication: 120g 100% Polyester fabric

Branding:

E SP HP

Waistcoat - Regular Fit								
Sizes	S	M	L	XL	2XL	3XL	4XL	5XL
1/2 Chest (cm)	57	59.5	62	64.5	67	70	73	76



Royal



Safety Orange



Lumo Green



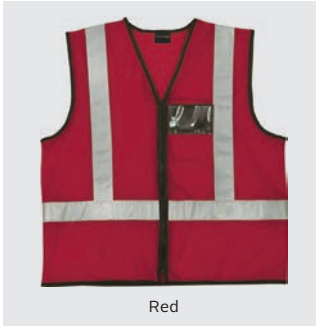
Safety Yellow



Navy



Hot Pink



Red



WC-AIR - AIRFIELD WAISTCOAT

Features: Contrast binding on neckline, armholes and hem • CE approved PVC reflective tape

• ID pocket with snap closure on chest

Fabrication: 100% Polyester mesh

Branding:

HP

Waistcoat - Budget Sizing								
SIZE (CM)	S	M	L	XL	2XL	3XL	4XL	5XL
1/2 Chest	54	56	58	60	62	64	66	68



Safety Yellow

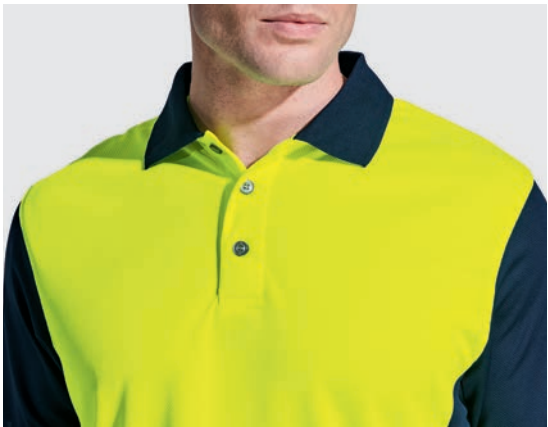




Safety Orange/Navy



Safety Yellow/Navy



HI-SUR - SURGE GOLFER

Features: Dynamic golfer perfect for the workwear industry • High-visibility body
• Reflective chevron and reflective print next to the panels • Knitted rib collar
• Grown on placket • Set sleeves
Fabrication: 170g 100% Polyester with moisture management
Branding:

E SP HP

Mens Golfer - Easy Fit								
Sizes	S	M	L	XL	2XL	3XL	4XL	5XL
½ Chest (cm)	53	56.5	60	63.5	67	70.5	74	77.5

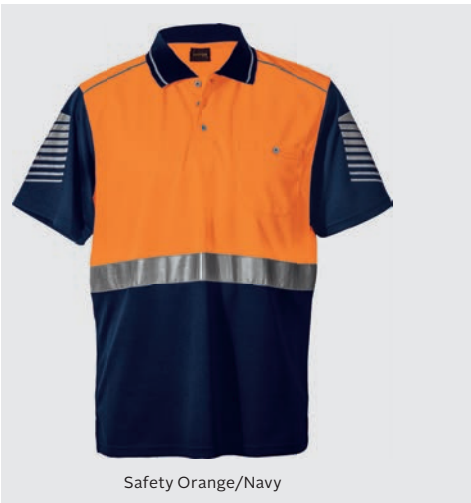
HI-RAI - RAID GOLFER

Features : Twin needle cover seam hem • Printed reflective detail on sleeves • Knitted rib collar • Grown on placket • Shoulder panel with reflective piping • Two-tone body with reflective tape on the front and back
Fabrication: 170g 100% Polyester with moisture management

Branding:

E SP HP

Mens Golfer - Easy Fit								
Sizes	S	M	L	XL	2XL	3XL	4XL	5XL
½ Chest (cm)	53	56.5	60	63.5	67	70.5	74	77.5





Safety Orange/Navy



Safety Yellow/Navy



HI-PAT - PATROL GOLFER

Features: Reflective tape across chest and shoulders • Day and night application
• Two-tone styling with great versatility • Three button placket • Striped knitted collar
• Top-stitched finish for durability • Ideal for construction workers, safety patrol or security

Fabrication: 180g 60/40 Bonded fabric with Polyester outer and Cotton rich inner

Branding:



Mens Golfer - Regular Fit								
Sizes	S	M	L	XL	2XL	3XL	4XL	5XL
1/2 Chest (cm)	55	58	60.5	63	65.5	68	71.5	74.5

HI-TRA - TRANSIT LONG SLEEVE GOLFER

Features: Reflective tape across waist, shoulders and elbows • Day and night application • Long sleeve high-visibility golfer with reflective tape • Three button placket • Double striped knitted collar • Chest pocket
• Rib-cuff • Ideal for construction workers, safety patrols or security

Fabrication: 180g 60/40 Bonded fabric with Polyester outer and Cotton rich inner

Branding:

E **SP** **HP**

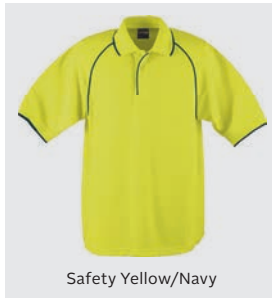
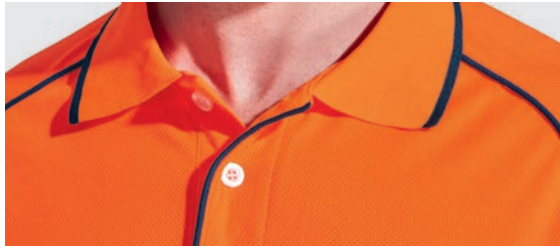
Mens Golfer - Easy Fit								
Size	S	M	L	XL	2XL	3XL	4XL	5XL
1/2 Chest (cm)	53	56.5	60	63.5	67	70.5	74	77.5



Safety Orange/Navy



Safety Yellow/Navy



Safety Yellow/Navy



Safety Orange/Navy



HI-NAV - NAVIGATOR GOLF SHIRT

Features: Contrast piping detail • Easy care garment • Raglan styling • Coordinated knitted collar • White marble three button reinforced placket • Striking option for safety wear • Will complement any promotional range

Fabrication: 170g 100% Polyester fabric

Branding:

E **SP** **HP**

Mens Golfer - Regular Fit								
Sizes	S	M	L	XL	2XL	3XL	4XL	5XL
1/2 Chest (cm)	55	58	60.5	63	65.5	68	71.5	74.5



TAL - TAILGATE GOLFER

Features : Striking raglan design • Reflective piping on sleeves and side panels for high-visibility • Double-stitched hem • Three button placket • Side slits • Knitted collar and cuffs • Contrast double stripes • Bonded fabric with Polyester outer and Cotton inner

Fabrication: 180g 60/40 Cotton rich fabric

Branding:

E **SP** **HP**

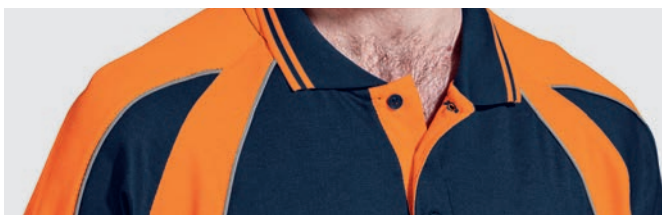
Mens Golfer - Easy Fit								
Sizes	S	M	L	XL	2XL	3XL	4XL	5XL
½ Chest (cm)	53	56.5	60	63.5	67	70.5	74	77.5



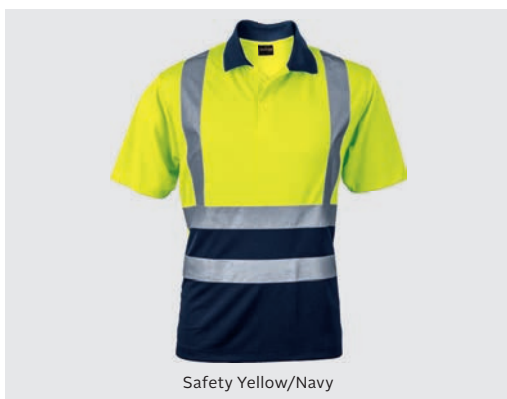
Navy/Safety Orange



Navy/Safety Yellow



Safety Orange/Navy



Safety Yellow/Navy



HI-AVI - AVIATOR GOLFER

Features : Two-tone styling • Three button placket • Contrast knitted collar • Chest and waist reflective tape for great visibility

Fabrication: 140g 100% Polyester fabric with moisture management finish

Branding:

E **SP** **HP**

NEW

Mens Golfer - Easy Fit								
Sizes	S	M	L	XL	2XL	3XL	4XL	5XL
½ Chest (cm)	53	56.5	60	63.5	67	70.5	74	77.5



TSS150BT - 150G POLY COTTON SAFETY T-SHIRT WITH TAPE

Features : Double-needle finish for durability • Reflective tape on both front and back of sleeves and chest to provide maximum visibility • High-visibility tape
• Lumo Green is a new colourway

Fabrication: 150g 65/35 Poly Cotton single jersey fabric

Branding:

E **SP** **HP**

T-Shirt - Comfort Fit

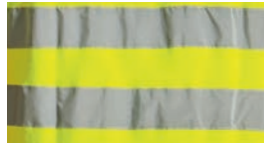
Sizes	S	M	L	XL	2XL	3XL	4XL	5XL
1/2 Chest (cm)	51	54	57	60	63	66	69	72



Lumo Green



Safety Yellow



Safety Orange



Navy



Navy/Safety Yellow



Navy/Safety Orange



Navy



Navy/Blue



LO-SHA - SHAFT SAFETY SHIRT LONG SLEEVE

Features: Contrast two piece collar • Long sleeve high-visibility shirt with reflective tape
• Constructed placket • Chest pocket with flap • Velcro closure and extended back hem • Triple-stitching
• Available in long sleeve only • Navy/Blue is a new colourway

Fabrication: 100% Lightweight Cotton twill fabric with a UV finish

Branding:

E **SP** **HP**

Mens Lounge Shirt - Regular Fit

Sizes	S	M	L	XL	2XL	3XL	4XL	5XL
Collar	38	40	42	44	46	48	50	52
1/2 Chest (cm)	52	57	62	67	72	77	82	87



CON-SVEST - CONTRACT SLEEVELESS REFLECTIVE VEST

Features: Reflective tape • Full zip front • Two-tone colourway • ID Chest pocket
• ISO 20471:2013 approved

Fabrication: 100g Polyester mesh fabric

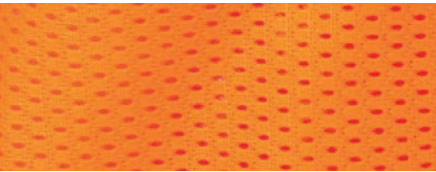
Branding:

E HP

Jacket - Budget Sizing								
Sizes	S	M	L	XL	2XL	3XL	4XL	5XL
1/2 Chest (cm)	54	56	58	60	62	64	66	68



Safety Yellow/Orange



CON-LVEST - CONTRACT LONG SLEEVE REFLECTIVE VEST

Features: Reflective tape • Full zip front • Two-tone colourway • ID Chest pocket
• ISO 20471:2013 approved

Fabrication: 100g Polyester mesh fabric

Branding:

E

Jacket - Budget Sizing								
Sizes	S	M	L	XL	2XL	3XL	4XL	5XL
1/2 Chest (cm)	54	56	58	60	62	64	66	68



Safety Yellow/Orange





Safety Yellow



Safety Orange

STN-JAC - STANLEY BODYWARMER

Features : Safety body warmer with reflective detail • Fully padded and fully lined • Front inverted nylon zip with chin guard • Tonal stretch binding at armholes • Side welt pockets • High-low hemline
Fabrication: 100% Polyester outer fabric

NEW

Branding:

E

Bodywarmer - Regular Fit								
Sizes	S	M	L	XL	2XL	3XL	4XL	5XL
½ Chest (cm)	54.5	58	61.5	65	68.5	72	75.5	79





FOR-JAC - FORCE JACKET

Features : Epaulettes • Removable sleeves which makes it a versatile work wear garment • Full frontal zip • Solid chest and back panel for branding • 2 Side pockets • Elasticated cuffs and waistband • Reflective tape • High-visibility mesh jacket

Fabrication: 100% Polyester

Branding:

E SP HP

BARRON Jacket - Easy Fit								
Sizes	S	M	L	XL	2XL	3XL	4XL	5XL
1/2 Chest (cm)	57	60	63	66	69	72	75	78



Safety Yellow/Orange



MI-QUA - QUARRY FLEECE

Features: Double top-stitched hem • Easy care garment • Anti-pill finish • Safety fleece with reflective tape across the chest and sleeves • Contrast collar • Chunky front zip

Fabrication: 240g 100% Polyester micro fleece

Branding:

E

Mens Fleece - Comfort Fit

Sizes	XS	S	M	L	XL	2XL	3XL	4XL	5XL
1/2 Chest (cm)	54	57	60	63	66	69	72	75	78



Navy/Safety Yellow



Navy/Safety Orange





HAW-JAC - HAWK JACKET

Features: Fold away hood with velcro detail • Contrast fleece collar detail
• Inner quilted and padded lining • Waterproof bunny jacket • Elasticated sleeve cuffs and hem band • Reflective tape for high visibility • Slanted welt pockets
Fabrication: 100% Polyester, 300D Oxford

Branding:



BARRON Jacket - Regular Fit								
Sizes	S	M	L	XL	XXL	XXXL	4XL	5XL
1/2 Chest (cm)	58	62	66	70	74	78	82	86



Safety Yellow/Navy



Safety Orange/Navy



BAR-JAC - BARRICADE JACKET

Features: Removable sleeves • Inner zip for embroidery access • ID Pocket • Removable sleeves • Welt side pocket • Chest pockets • Sleeve pocket • Ribbed hem and cuffs • Reinforced seams • Bar tacking finish on all pressure points for a high quality work wear garment • Water resistant coating • Contrast 220g micro fleece lining

Fabrication: 100% Coated oxford Polyester

Branding:

E HP

BARRON Jacket - Regular Fit								
Sizes	S	M	L	XL	2XL	3XL	4XL	5XL
1/2 Chest (cm)	58	62	66	70	74	78	82	86



Safety Orange



Safety Yellow



Black



Navy





Safety Orange/Navy



Safety Yellow/Navy

VEN-JAC - VENTURE PADDED JACKET

Features: High-visibility reflective tape • Padded and fully lined • Two-tone medium weight jacket • Adjustable cuffs • Storm flap • Concealed hood • Two front pockets with a flap • Reinforced seams • Bar-tacked finish on all pressure points
Fabrication: Water and wind resistant Polyester fabric

Branding:

E SP

BARRON Jacket - Regular Fit

Sizes	S	M	L	XL	2XL	3XL	4XL	5XL
1/2 Chest (cm)	58	62	66	70	74	78	82	86



Safety Yellow/Navvy



Safety Orange/Navvy



FLE-JAC - FLEET JACKET

Features: Front horizontal inseam pockets • Fully padded • Fully lined • Two-tone jacket • Perfect for working in winter • Reflective tape on shoulders, sleeves and body • Velcro tab on sleeve hem • Front chest pocket with zip closure • Concealed hood with cord and toggles • Front yoke has been angled for ample branding space • Water and wind resistant coating

Fabrication: 100% Coated oxford Polyester

Branding:

E

BARRON Jacket - Regular Fit

Sizes	S	M	L	XL	2XL	3XL	4XL	5XL
1/2 Chest (cm)	58	62	66	70	74	78	82	86

CON3-JAC - CONTRACTOR 3-IN-1 JACKET

Features: Reflective tape for high-visibility • Wind resistant • Versatile workwear jacket • Lightweight outer jacket • Removable zip-off mesh vest with safety tape • Combined high-visibility jacket • Front storm flap • Adjustable sleeve tabs • Concealed roll-up hood • Inner pocket • Reinforced seams • Bar-tacked finish on all pressure points for toughness • Water-resistant coating

Fabrication: 100% Coated oxford Polyester

Branding:

E SP

BARRON Jacket - Regular Fit								
Sizes	S	M	L	XL	2XL	3XL	4XL	5XL
½ Chest (cm)	56	60	64	68	72	76	80	84



Safety Orange/Navy



Safety Yellow/Navy



Orange inner mesh



Yellow inner mesh



BLA4-JAC - BLAZE 4-IN-1 JACKET

Features: Lightweight padding with removable inner • Wind resistant
 • Ingenious work wear jacket • Lightweight outer jacket • Polar fleece body warmer
 • Zip-off water-resistant high-visibility body warmer • Combined Hi-Vis jacket
 • Front storm flap • Adjustable cuffs • Concealed hood • Two front pockets with flaps
 • Reinforced seams • Bar-tacked finish on all pressure points for durability
 • Water-resistant finish • Removable inner has a high-visibility reflective tape and fleece lining

Fabrication: 100% Coated oxford Polyester

Branding:

E

BARRON Jacket - Regular Fit

Sizes	S	M	L	XL	2XL	3XL	4XL	5XL
1/2 Chest (cm)	56	60	64	68	72	76	80	84



Safety Orange/Navy



Safety Yellow/Navy



Orange reversible inner



Yellow reversible inner





Safety Orange



Safety Yellow



Navy



CON-JAC - CONVOY JACKET

Features: Concealed hood • Reflective tape for high-visibility • Wind resistant • Versatile jacket • Elasticated cuffs • Full zip front • Towelling • Draw cord and toggles in the hood and waist

Fabrication: 100% Polyester water-resistant outer fabric

Branding:

SP

BARRON Jacket - Econo Fit								
Sizes	S	M	L	XL	2XL	3XL	4XL	5XL
½ Chest (cm)	57.5	60	62.5	65	67.5	70	72.5	75



Red



Black



Navy

BEA-JAC - BEACON JACKET

Features: Zip-off padded hood • Wind resistant • Robust jacket with quilted padding • Storm flap • Front chest pockets with studs • Two front pockets with double entry • Adjustable velcro tabs on the cuffs • Reflective tape for high-visibility • Designed to allow for easy embroidery access • Red is a new colourway

Fabrication: 100% Polyester outer with water-resistant finish

Branding:

E

BARRON Jacket - Regular Fit								
Sizes	S	M	L	XL	2XL	3XL	4XL	5XL
1/2 Chest (cm)	56	60	64	68	72	76	80	84



R-ELE - ELEMENT RAIN SUIT

Features: Jacket with fold away hood, storm flap and plastic studs • Front storm flap with zip opening and plastic studs • Adjustable plastic studs on sleeve and trouser hem • Reflective tape on chest, elbows and knees for high visibility • Elasticated waist on trousers • Trousers have adjustable plastic studs on hem • Two side entries for pocket access on pants

Fabrication: Polyester PVC coated fabric

Branding:

SP

NEW

Rain Suit - Regular Fit								
Sizes	S	M	L	XL	2XL	3XL	4XL	5XL
Jacket Sizes	36	38	40/42	44	46/48	50	52/54	56/58
½ Chest (cm)	57	61	65	69	73	77	81	85
Waist (cm)	76-91	81-96	85-101	91-106	96-111	101-116	106-121	111-128



Safety Yellow/Reflect



Navy/Reflect



Safety Yellow/Navy



Safety Orange/Navy



HW045 - 7 PANEL HAZARD CAP

Features: Unstructured 7 panel cap • Contrast mesh inserts • Pre-curved peak with reflective tape binding • Safety application • Velcro closure

Fabrication: 100% Hi-Vis Polyester fabric

Branding:



Safety Orange



Safety Yellow

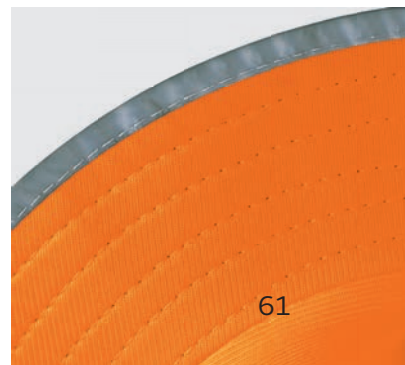
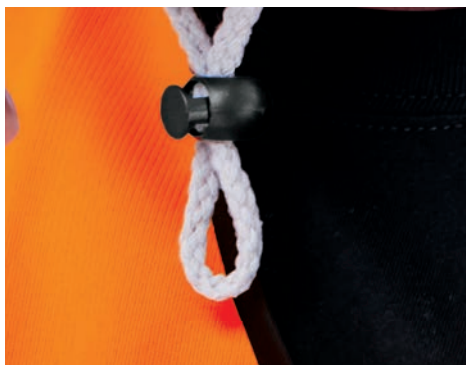
CON-SSUN - CONTRACT SAFETY SUN HAT

Features: Reflective binding on edge • Inner sweatband • Cord and stopper

• Available in 2 Hi-Visibility colours

Fabrication: 100% Hi-Vis Polyester fabric

Branding:





ON

PROTECTIVE OUTERWEAR

Put safety first, second and third with these acid-resistant, flame-retardant, dust-proof products designed to protect your greatest assets, your people.



Royal



CS-HI - HI-VIS CONSTRUCTION CONTI SUIT

Features: Reflective tape on hem and sleeve edge • Chest pockets with reflective tape and mesh detail • Pants have ½ elasticated waistband • Front slanted pockets • Reflective tape on knees • Bartacks on stress points • Triple needle stitching to reinforce seams

Fabrication: 210g 80/20 Poly Cotton Twill

Branding:

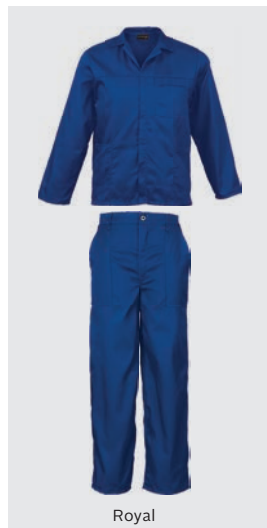
E **SP** **HP**

HI-Vis Construction Conti Suit - Supreme Fit

Sizes	XS	S	S	M	M	L	L	XL	2XL	3XL	3XL	4XL	4XL	5XL
Jacket Sizes	32	34	36	38	40	42	44	46	48	50	52	54	56	58
½ Chest (cm)	49,8	52,2	54,6	57	59,4	61,8	64,2	66,6	69	71,4	73,8	77,2	79,6	82
Waist (cm)	70-82	75-87	80-92	85-97	90-102	95-107	100-112	105-117	110-122	115-127	120-132	125-137	130-142	135-147



PROTECTIVE OUTERWEAR



Royal



Royal



CT-CON - CONTRACT POLY COTTON CONTI SUIT

Features: Two side pockets • Monza chest pocket with single top-stitching
 • Pants have 1/2 elasticated waistband • Two side entry pockets • One back patch pocket
 • Triple needle stitching on inner leg, front and back rise

Fabrication: 200g 80/20 Poly Cotton Twill Fabric

Branding:

E SP HP



CT-CONR - CONTRACT POLY COTTON CONTI SUIT WITH REFLECTIVE TAPE

Features: Reflective tape on elbows and knees • Two side pockets • Monza chest pocket with single top-stitching • Pants have 1/2 elasticated waistband • Two side entry pockets
 • One back patch pocket • Triple needle stitching on inner leg, front and back rise

Fabrication: 200g 80/20 Poly Cotton Twill Fabric

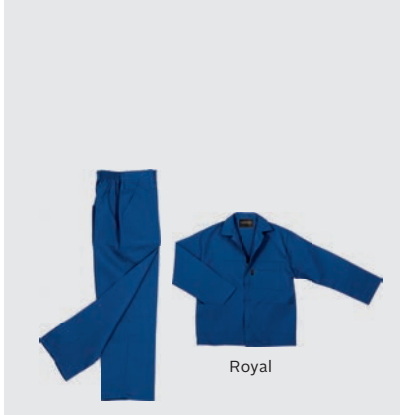
Branding:

E SP HP

BARRON Conti Suit - Budget Fit														
Sizes	XS	S	S	M	M	L	L	XL	2XL	3XL	3XL	4XL	4XL	5XL
Jacket Sizes	32	34	36	38	40	42	44	46	48	50	52	54	56	58
1/2 Chest (cm)	48.5	51	53.5	56	58.5	61	63.5	66	68.5	71	73.5	76	78.5	81
Waist (cm)	62-72	67-77	72-82	77-87	82-92	87-97	92-102	97-107	102-112	107-117	112-122	117-127	122-132	127-137



PROTECTIVE OUTERWEAR



Royal



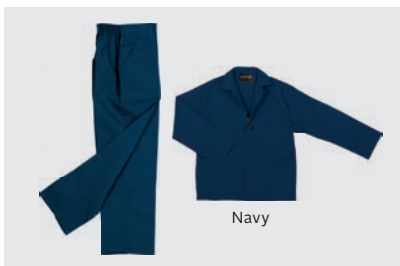
Emerald



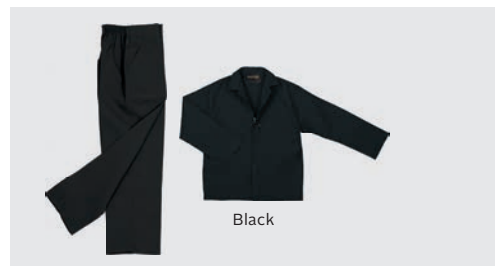
Red



Orange



Navy



Black



White



Brown



Grey



Khaki

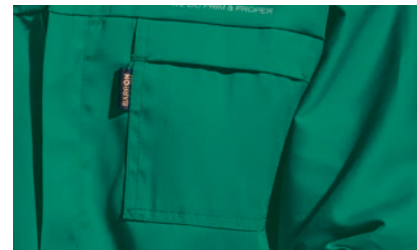
CS-BPC - BARRON BUDGET POLY COTTON CONTI SUIT

Features: Sold according to jacket sizes • Concealed metallic zips
 • Jacket has two side pockets • Monza chest pocket with single top-stitching throughout • Pants have ½ elasticated waistband, two side pockets, one back pocket • Triple-stitched inner leg, back and front rise

Fabrication: 210g Poly Cotton Twill fabric

Branding:

E **SP** **HP**



BARRON Conti Suit - Budget Fit														
Sizes	XS	S	S	M	M	L	L	XL	2XL	3XL	3XL	4XL	4XL	5XL
Jacket Sizes	32	34	36	38	40	42	44	46	48	50	52	54	56	58
½ Chest (cm)	48.5	51	53.5	56	58.5	61	63.5	66	68.5	71	73.5	76	78.5	81
Waist (cm)	62-72	67-77	72-82	77-87	82-92	87-97	92-102	97-107	102-112	107-117	112-122	117-127	122-132	127-137



PROTECTIVE OUTERWEAR



Red



Royal



Navy



Black



Grey



Orange



Emerald



Khaki

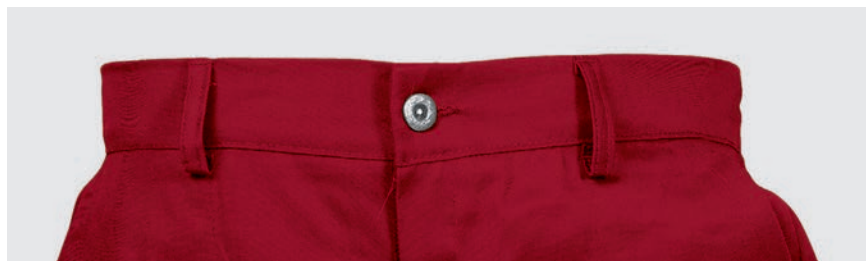


CS-BR - BARRON BUDGET POLY COTTON CONTI WITH REFLECTIVE TAPE

Features: Reflective tape on elbows and knees • Concealed metallic zips
 • Two side pockets • Monza chest pocket • Single top-stitching throughout
 • Pants have 1/2 elasticated waistband, two side pockets, one back pocket
 • Triple-stitched inner leg, back and front rise • Sold according to jacket sizes

Fabrication: 210g Poly Cotton Twill fabric

Branding:



BARRON Conti Suit - Budget Fit

Sizes	XS	S	S	M	M	L	L	XL	2XL	3XL	3XL	4XL	4XL	5XL
Jacket Sizes	32	34	36	38	40	42	44	46	48	50	52	54	56	58
1/2 Chest (cm)	48.5	51	53.5	56	58.5	61	63.5	66	68.5	71	73.5	76	78.5	81
Waist (cm)	62-72	67-77	72-82	77-87	82-92	87-97	92-102	97-107	102-112	107-117	112-122	117-127	122-132	127-137



CT-TT - BARRON BUDGET TWO-TONE CONTI JACKET

Features: Front patch pockets • Contrast front and back yoke • Monza pocket • Concealed CF zip

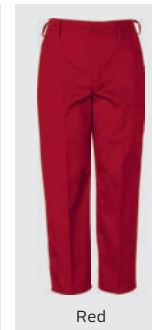
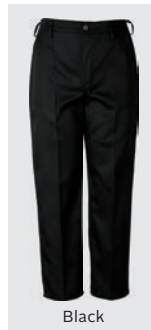
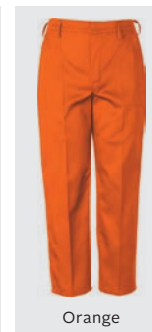
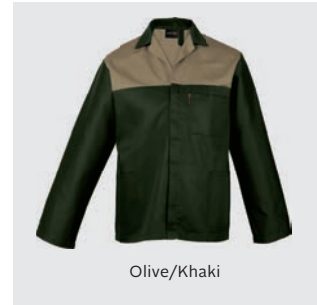
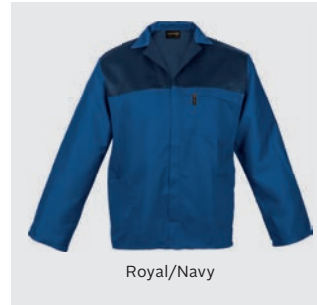
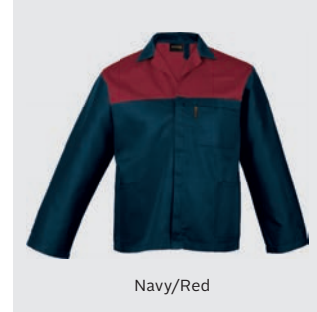
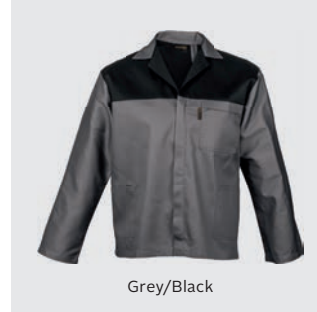
Fabrication: 210g 80/20 Poly Cotton

Branding:

E SP HP

BARRON Conti Suit - Budget Fit

Sizes	XS	S	S	M	M	L	L	XL	2XL	3XL	3XL	4XL	4XL	5XL
Jacket Sizes	32	34	36	38	40	42	44	46	48	50	52	54	56	58
½ Chest (cm)	48.5	51	53.5	56	58.5	61	63.5	66	68.5	71	73.5	76	78.5	81



CT-BPC / CT-BC - BARRON BUDGET POLY COTTON/ COTTON CONTI TROUSER

Features: Sold according to waist sizes • Concealed metallic zip • Bar-tacking on all pressure point • Trousers have ½ elasticated waistband, two side pockets and one back pocket • Triple-stitching on the inner leg, back and front rise

Fabrication: 210g Poly Cotton Twill fabric / 100% Cotton denim fabric

Branding:

E

BARRON Conti Pants - Budget Fit

Sizes	S	S	M	M	L	L	XL	2XL	3XL	3XL	4XL	4XL	5XL
Waist (cm)	30	32	34	36	38	40	42	44	46	48	50	52	54
½ Waist (cm)	67 - 77	72 - 82	77 - 87	82 - 92	87 - 97	92 - 102	97 - 107	102 - 117	107 - 117	112 - 122	117 - 127	122 - 132	127 - 137



PROTECTIVE OUTERWEAR



CS-BC - BARRON BUDGET 100% COTTON CONTI SUIT

Features: Concealed front zips • Sold according to jacket sizes • Jacket features include two side pockets and a Monza chest pocket with single top-stitching throughout
• The pants have ½ elasticated waistband, triple-stitched inner leg, back and front rise, two side pockets and one back pocket

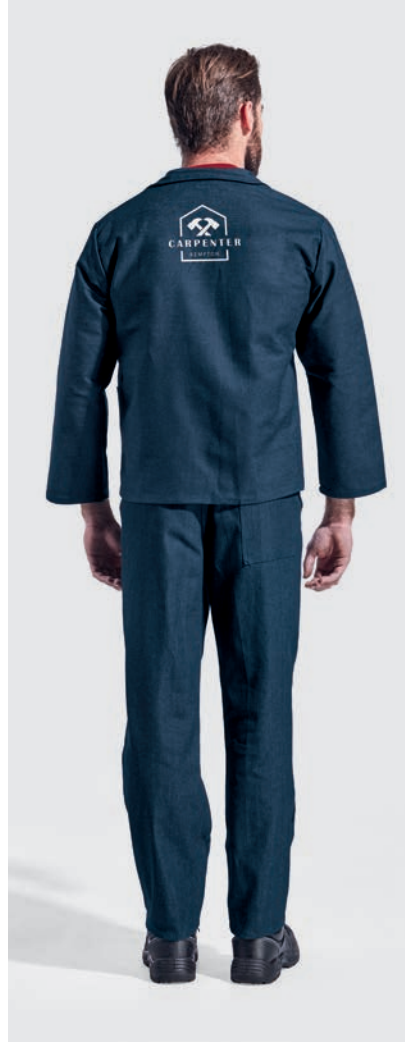
Fabrication: 220g 100% Cotton Twill fabric, 10 Oz Denim fabric

Branding:

E

SP

HP



Navy



Royal



Denim

BARRON Conti Suit - Budget Fit

Sizes	XS	S	S	M	M	L	L	XL	2XL	3XL	3XL	4XL	4XL	5XL
Jacket Sizes	32	34	36	38	40	42	44	46	48	50	52	54	56	58
½ Chest (cm)	48.5	51	53.5	56	58.5	61	63.5	66	68.5	71	73.5	76	78.5	81
Waist (cm)	62-72	67-77	72-82	77-87	82-92	87-97	92-102	97-107	102-112	107-117	112-122	117-127	122-132	127-137

CS-BCR - BARRON BUDGET 100% COTTON CONTI SUIT WITH REFLECTIVE TAPE

Features: Reflective tape on elbows and knees • Concealed metallic zips • Two side pockets • Monza chest pocket • Single top-stitching throughout • Pants have ½ elasticated waistband, two side pockets, one back pocket • Triple-stitched inner leg, back and front rise • Sold according to jacket sizes

Fabrication: 100% Cotton

Branding:

E **SP** **HP**



BARRON Conti Suit - Budget Fit														
Sizes	XS	S	S	M	M	L	L	XL	2XL	3XL	3XL	4XL	4XL	5XL
Jacket Sizes	32	34	36	38	40	42	44	46	48	50	52	54	56	58
½ Chest (cm)	48.5	51	53.5	56	58.5	61	63.5	66	68.5	71	73.5	76	78.5	81
Waist (cm)	62-72	67-77	72-82	77-87	82-92	87-97	92-102	97-107	102-112	107-117	112-122	117-127	122-132	127-137



BS-BC - BUDGET BOILER SUIT

Features: Front patch pocket at chest • Triple needle stitching to reinforce seams
• Bartacks on stress points • Concealed front with shank opening • Red is a new colourway

Fabrication: 210g 80/20 Poly Cotton Twill

Branding:

E

SP

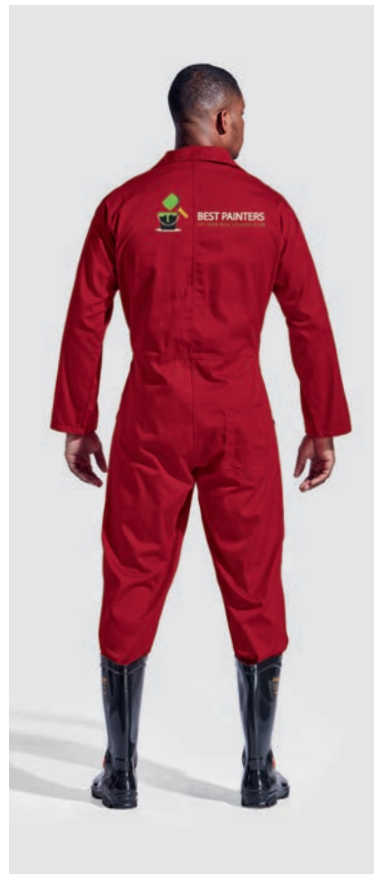
HP



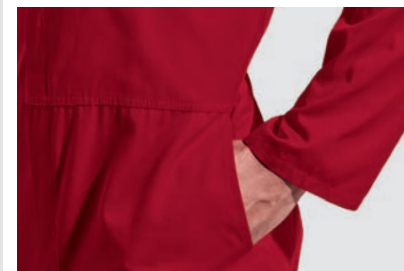
Royal



White



Red



Budget Boiler Suit - Budget Fit

Sizes	S	S	M	M	L	L	XL	2XL	3XL	3XL	4XL	4XL	5XL
Sizes (cm)	32	34	36	38	40	42	44	46	48	50	52	54	56
½ Chest (cm)	49,5	52	54,5	57	59,5	62	64,5	67	69,5	72	74,5	77	79,5



CS-SPC - BARRON SUPREME POLY COTTON CONTI SUIT

Features: Jacket with concealed YKK zip • Twin-needle top-stitched mitred chest pocket with V- flap and pen division • Triple-stitching has been added to the armholes and underarm • Pants have ½ elasticated waistband • Triple top-stitched front, back rise and inner and outer leg • Pants with double top-stitched side pockets and one back pocket • Reinforced bar-tacking on seams and all pressure points

Fabrication: 210g 80/20 Poly Cotton Twill fabric

Branding:

E SP HP



Royal



Navy

BARRON Conti Suit - Supreme Fit														
Sizes	XS	S	S	M	M	L	L	XL	2XL	3XL	3XL	4XL	4XL	5XL
Jacket Sizes	32	34	36	38	40	42	44	46	48	50	52	54	56	58
½ Chest (cm)	49.8	52.2	54.6	57	59.4	61.8	64.2	66.6	69	71.4	73.8	77.2	79.6	82
Waist (cm)	70-82	75-87	80-92	85-97	90-102	95-107	100-112	105-117	110-122	115-127	120-132	125-137	130-142	135-147



PROTECTIVE OUTERWEAR

CS-SR - BARRON SUPREME POLY COTTON
CONTI SUIT WITH REFLECTIVE

Features: Jacket features include concealed YKK zip • Twin-needle top-stitched mitred chest pocket with V-flap and pen division • Triple-stitching on the armholes and underarms • Triple top-stitched front, back rise and inner and outer leg • Pants with double top-stitched side pockets and one back pocket • Reinforced bar-tacking on seams and all pressure points • Pants have ½ elasticated waistband • Reflective tape on elbows and knees

Fabrication: 210g 80/20 Poly Cotton Twill fabric

Branding:



NEW



Royal



Navy

BARRON Conti Suit - Supreme Fit														
Sizes	XS	S	S	M	M	L	L	XL	2XL	3XL	3XL	4XL	4XL	5XL
Jacket Sizes	32	34	36	38	40	42	44	46	48	50	52	54	56	58
½ Chest (cm)	49.8	52.2	54.6	57	59.4	61.8	64.2	66.6	69	71.4	73.8	77.2	79.6	82
Waist (cm)	70-82	75-87	80-92	85-97	90-102	95-107	100-112	105-117	110-122	115-127	120-132	125-137	130-142	135-147

CS-SC - BARRON SUPREME 100% COTTON CONTI SUIT

Features: Jacket with concealed YKK zip • Twin-needle top-stitched mitred chest pocket with V- flap and pen division • Triple-stitching has been added to the armholes and underarm • Pants have ½ elasticated waistband • Triple top-stitched front, back rise and inner and outer leg • Pants with double top-stitched side pockets and one back pocket • Reinforced bar-tacking on seams and all pressure points

Fabrication: 220g 100% Cotton

Branding:

E SP HP



BARRON Conti Suit - Supreme Fit														
Sizes	XS	S	S	M	M	L	L	XL	2XL	3XL	3XL	4XL	4XL	5XL
Jacket Sizes	32	34	36	38	40	42	44	46	48	50	52	54	56	58
½ Chest (cm)	49.8	52.2	54.6	57	59.4	61.8	64.2	66.6	69	71.4	73.8	77.2	79.6	82
Waist (cm)	70-82	75-87	80-92	85-97	90-102	95-107	100-112	105-117	110-122	115-127	120-132	125-137	130-142	135-147



CJ-D59 - BARRON D59 (SABS) FLAME AND ACID RETARDANT CONTI JACKET

Features: Reinforced bar-tacked seams and pressure points
• Reflective tape on elbows • SABS approved • Concealed YKK front zip opening • Chest pocket with V-flap and press stud, hangerloop, side slits and elasticated cuffs

Fabrication: 300g 100% Cotton with acid and flame retardant finish

Branding:

E SP HP



Navy



Navy



CT-D59 - BARRON D59 (SABS) FLAME AND ACID RETARDANT CONTI TROUSER

Features: Reinforced bar-tacked seams and pressure points
• Reflective tape on knees • SABS approved • ½ Elasticated waistband • Triple needle top-stitching on front and back rise and also on the inner and outer leg • Two swing pockets, money pocket, side tool pocket and one back patch pocket

Fabrication: 300g 100% Cotton with acid and flame retardant finish

Branding:

E SP HP

BARRON Conti Suit - SABS Fit

Sizes	XS	S	S	M	M	L	L	XL	2XL	3XL	3XL	4XL	4XL	5XL
Jacket Sizes	32	34	36	38	40	42	44	46	48	50	52	54	56	58
½ Chest (cm)	49.5	52	54.5	57	59.5	62	64.5	67	69.5	72	74.5	77	79.5	82
Waist (cm)	70-80	75-85	80-90	85-90	90-100	95-105	100-110	105-115	110-120	115-125	120-130	125-135	130-140	135-145

BS-D59 - BARRON D59 (SABS) FLAME AND ACID RETARDANT BOILER SUIT

Features: Reinforced bar-tacked seams and pressure points • Reflective tape on elbows and knees • Elasticated sleeve cuffs • Concealed YKK front metal zip opening • Chest pocket with V-flap and press stud • Triple needle top-stitching detail • Two side hip pockets, side leg tool pocket and back patch pocket • SABS approved
Fabrication: 300g 100% Cotton with acid & flame retardant finish

Branding:

E SP HP

NEW



Navy



BARRON Boiler Suit - SABS Fit														
Sizes	XS	S	S	M	M	L	L	XL	2XL	3XL	3XL	4XL	4XL	5XL
Jacket Sizes	32	34	36	38	40	42	44	46	48	50	52	54	56	58
½ Chest (cm)	49.5	52	54.5	57	59.5	62	64.5	67	69.5	72	74.5	77	79.5	82



CS-APC - BARRON ACID RESISTANT POLY COTTON CONTI SUIT

Features: Concealed front zips • Bar-tacking on pressure points • Jacket features include two side pockets • Monza chest pocket with double top-stitching
• The pants have ½ elasticated waistband with triple-stitching on the inner and outer leg as well as the back and front rise • Pants feature two side pockets and one back pocket

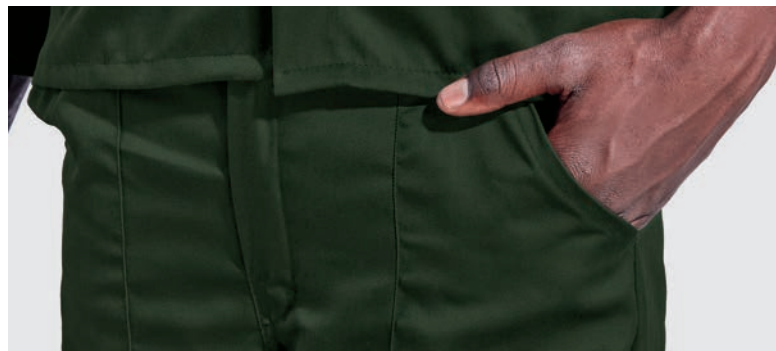
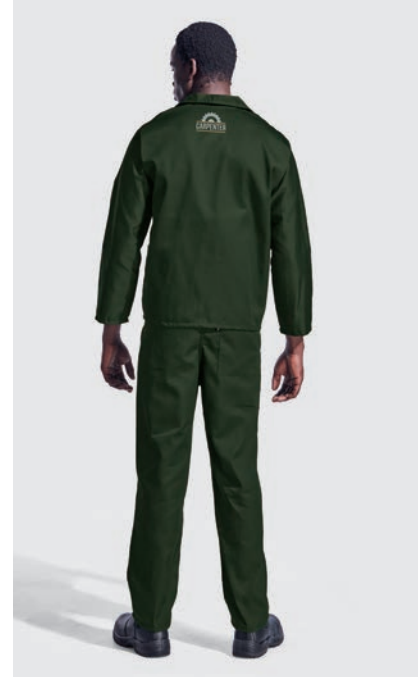
Fabrication: 80/20 Poly Cotton with acid resistant finish

Branding:

E



Olive



BARRON Conti Suit - Budget Fit														
Sizes	XS	S	S	M	M	L	L	XL	2XL	3XL	3XL	4XL	4XL	5XL
Jacket Sizes	32	34	36	38	40	42	44	46	48	50	52	54	56	58
½ Chest (cm)	48.5	51	53.5	56	58.5	61	63.5	66	68.5	71	73.5	76	78.5	81
Waist (cm)	62-72	67-77	72-82	77-87	82-92	87-97	92-102	97-107	102-112	107-117	112-122	117-127	122-132	127-137



CS-PJ - PREMIER CONTI JACKET WITH REFLECTIVE TAPE

Features: Jacket features include two front pockets, one chest pocket with flap and pen slot, side slits and front yoke. For added durability triple-stitching has been added to the armholes, underarm and shoulder seams.

Fabrication: 210g Polyester blend fabric • High-visibility reflective tape • Reinforced bar tacking on all pressure points

Branding:

E SP HP



Safety Yellow/Navy



Safety Orange/Navy



Navy

CS-PT - PREMIER CONTI TROUSER WITH REFLECTIVE TAPE

Features: These conti trousers have ½ elasticated waist, two side pockets and one back pocket. Other features include triple-stitching inner leg, back and front rise

• High-visibility reflective tape • Bar tacking for added durability

Fabrication: 200g Polyester blend fabric

Branding:

E SP HP



BARRON Conti Suit - Supreme Fit

Sizes	XS	S	S	M	M	L	L	XL	2XL	3XL	3XL	4XL	4XL	5XL
Jacket Sizes	32	34	36	38	40	42	44	46	48	50	52	54	56	58
½ Chest (cm)	49.8	52.2	54.6	57	59.4	61.8	64.2	66.6	69	71.4	73.8	77.2	79.6	82
Waist (cm)	70-82	75-87	80-92	85-97	90-102	95-107	100-112	105-117	110-122	115-127	120-132	125-137	130-142	135-147



HOW TO CHOOSE YOUR CONTI SUIT



POLY COTTON BUDGET CONTI SUITS (CS-BPC)

- Strong durable fabric
- Standard cut
- Hold its shape well
- Does not wear well in heated areas
- Has good colour fastness qualities

SUPREME POLY COTTON (CS-SPC)

- Strong durable fabric
- Generous cut
- Holds its shape well
- Does not wear well in heated areas
- Has good colour fastness qualities



BUDGET 100% COTTON (CS-BC)

- Standard cut
- Good cooling properties
- Allow for 5% shrinkage
- Fading may occur
- Environmentally friendly fabric
- Breathable fabric
- Wears well in heated areas
- Non static fabric

SUPREME 100% COTTON (CS-SC)

- Generous cut
- Good cooling properties
- Allow for 5% shrinkage
- Fading may occur
- Environmentally friendly fabric
- Breathable fabric
- Wears well in heated areas
- Non static fabric



ACID RESISTANT POLY COTTON (CS-APC)

- Resistant to certain acids and alkalis
- Not resistant to battery acid, sulphuric acid, hydrofluoric acid and certain other acids
- Strong durable fabric
- Standard cut
- Hold its shape well
- Does not wear well in heated areas
- Has good colour fastness qualities



D59 FLAME AND ACID RETARDANT (CS-D59)

- SABS approved
- Heavy duty cotton fabric
- Acid retardant
- Resistant to certain acids and alkalis
- Not resistant to battery acid, sulphuric acid, hydrofluoric acid and certain other acids
- Flame retardant
- Generous cut
- Allow for 5% shrinkage
- Fading may occur
- Additional protection to be worn when welding i.e.: chrome leather apron, gloves and spats



SEWING ON REFLECTIVE TAPE

**WE CAN ADD REFLECTIVE TAPE
OR AN ID POCKET TO ANY GARMENT
IN OUR IN-HOUSE SEWING FACILITY.**



SEW ON POSITIONS:



Safety Yellow/Reflective



Safety Orange/Reflective
(Available on request)



Safety Pink/Reflective
(Available on request)



Silver Tape - 2 cm
(Available on request)



Silver Tape - 2.5 cm
(Available on request)



Silver Tape - 5 cm
(Available on request)



ID Pocket



GZ-JAC - GROUND ZERO JACKET

Features: Bar-tacking on all pressure point • Insulated padded jacket with elasticated cuff • Freezer Jacket, ideal for those very cold working conditions • Two front pockets, one chest pocket • Hood with draw cord • Invisible zip for embroidery access • Water resistance outer

Fabrication: Oxford Polyester outer, 140g Heavy weight padding and lining

Branding:

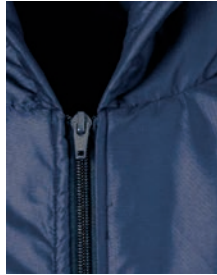
E

BARRON Ground Zero Jacket - Regular Fit

Sizes	S	M	L	XL	2XL	3XL	4XL	5XL
1/2 Chest (cm)	58	62	66	70	74	78	82	86



Navy



GZ-PAN - GROUND ZERO PANTS

Features: Insulated padded freezer pants • Elasticated waist with draw cord can easily be adjusted for a comfortable fit • Double top-stitched front and back rise for a durable finish • Water resistance outer

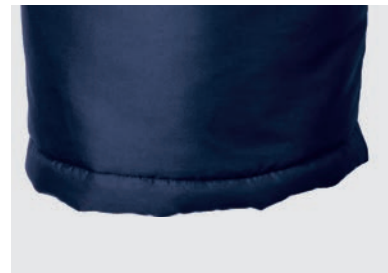
Fabrication: Oxford Polyester outer, 140g Heavy weight padding and lining

Branding:

E



Navy



BARRON Ground Zero Pants- Regular Fit

Sizes	XS	S	M	L	XL	2XL	3XL	4XL	5XL
Waist (cm)	26/28	30/32	34	36/ 38	40/42	44	46/48	50	52/54
1/2 Waist (cm)	66-73	74-81	82-89	90-97	98-105	106-113	114-121	122-129	130-138



BC-FSJ - BARRON FOOD SAFETY JACKET

Features: Available only in long sleeves • Bar-tacking on all pressure points • Food processing jacket • Cut-away neckline • Front yoke • Single top-stitching throughout • ½ Elasticated cuffs • Inner chest pocket with pen slot • Side slits

Fabrication: 225g 65/35 Poly Cotton fabric

Branding:

E

SP

HP

BARRON Chef - Tapered Fit

Sizes	XS	S	M	L	XL	2XL	3XL	4XL	5XL
½ Chest (cm)	45	50	55	60	65	70	75	80	85



White



BC-FSP - BARRON FOOD SAFETY PANTS

Features: Bar-tacking on all pressure points • Elasticated waistband with draw cord for a comfortable fit • Back pocket • Double top-stitched seams for added durability

Fabrication: 225g 65/35 Poly Cotton fabric

Branding:

E

SP

HP



White



Baggy Pants - Regular Fit									
Sizes	XS	S	M	L	XL	2XL	3XL	4XL	5XL
Waist (Inches)	26/28	30/32	34	36/ 38	40/42	44	46/48	50	52/54
½ Waist (cm)	66-73	74-81	82-89	90-97	98-105	106-113	114-121	122-129	130-138



CS-DISP - CONTRACT DISPOSABLE COVERALL

Features: Elasticated cuffs, ankles, back waist and hood

• CF zip opening

Fabrication: 35 GSM Non Woven material

BARRON Coverall - Budget Fit

Sizes (cm)	M	L	XL	2XL	3XL
Across Chest (Full)	140	150	160	166	186



White



Short Sleeve



Long Sleeve

LAB-MUL - MULTIFUNCTIONAL LAB COAT

Features: Front pockets on hem • Unisex coat • Perfect for any profession

• Grown on button stand • One piece collar • Patch pocket on chest

• Two back pleats • Laid on waist tab • Single layer back yoke

• Available in long and short sleeves

Fabrication: 210g Poly Cotton

Branding:

E SP HP

Multifunctional Lab Coat - Tapered Fit

Sizes	XS	S	M	L	XL	2XL	3XL	4XL	5XL
1/2 Chest (cm)	45	50	55	60	65	70	75	80	85



Long Sleeve



Short Sleeve



LAB-ALL - ALL-PURPOSE SHORT AND LONG SLEEVE LAB COAT

Features: Front pockets at hem • Unisex lab coat • Perfect for any profession • Concealed front opening with press studs • One piece collar • Chest pocket with pen slot and flap • Back hem vent • Long and short sleeves

Fabrication: 210g Poly Cotton

Branding:

E **SP** **HP**

NEW

All-Purpose Lab coat - Tapered fit									
Sizes	XS	S	M	L	XL	2XL	3XL	4XL	5XL
1/2 Chest (cm)	45	50	55	60	65	70	75	80	85





PROTECTIVE OUTERWEAR



White



Red



Royal



Navy



CS-DUST - BARRON POLY COTTON DUST COAT

Features: Button-through front • Thigh length • An industry standard for lab, warehouse, workshop and general maintenance application • Single chest and two front pockets • Durable self-colour plastic buttons for non-scratch wear

Fabrication: 210g Poly Cotton Twill fabric

Branding:

E **SP** **HP**

BARRON Dust Coat - Regular Fit

Sizes	XS	S	S	M	M	L	L	XL	2XL	3XL	3XL	4XL	4XL	5XL
Jacket Sizes	32	34	36	38	40	42	44	46	48	50	52	54	56	58
½ Chest (cm)	52	54	57	59	62	64	67	69	72	74	77	79	81	83



Royal/White



Navy/White



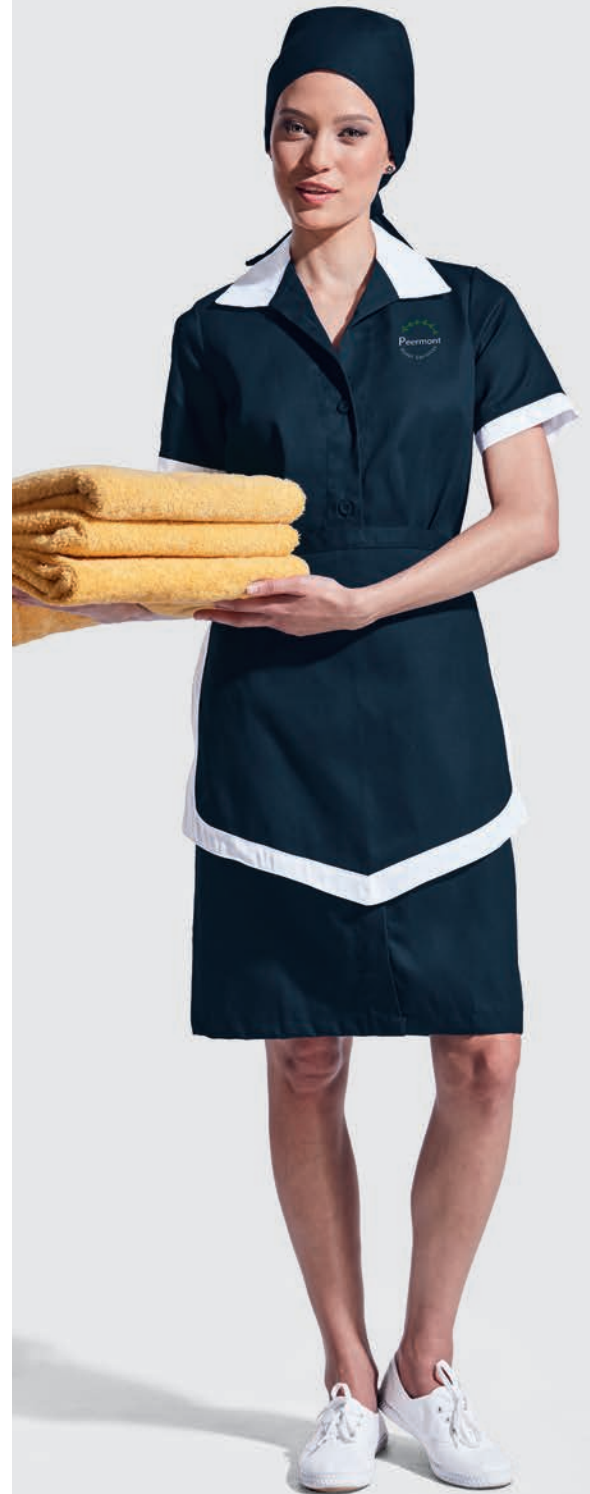
Emerald/White



Khaki/Animal Print



Black/White



CS-SET - LADIES POLY COTTON 3 PIECE SET

Features: Bust darts • Three piece house coat set • Set includes a dress, apron and head scarf • The dress is adapted from our new Ladies Poly Cotton House Coat • Contrast reverse collar • Grown on button stand with buttons • Two front patch pockets • Two-tone apron and head scarf • Royal/White and Emerald/White are new colourways

Fabrication: 210g 80/20 Poly Cotton

Branding:



Ladies Poly Cotton 3 Piece Set - Regular Fit

Sizes	XS	S	M	L	XL	2XL	3XL	4XL	5XL
1/2 Chest (cm)	43	47	51	55	59	63	67	71	75



PROTECTIVE OUTERWEAR



CS-HOU - LADIES POLY COTTON HOUSE COAT

Features: Bust darts • Perfect outerwear to protect ladies' clothes while cleaning or cooking • Grown on button stand with buttons • Two front patch pockets • Short sleeves with a cuff
Fabrication: 210g 80/20 Poly Cotton

Branding:

E

SP

HP

Ladies Poly Cotton House Coat - Regular Fit

Sizes	XS	S	M	L	XL	2XL	3XL	4XL	5XL
1/2 Chest (cm)	43	47	51	55	59	63	67	71	75



Royal



Navy



Red

PIN-IR - IRIS PINAFORE

Features: Perfect pinafore for a variety of industries • Adjustable waist tabs • Self-fabric binding on the edges
 • Kangaroo pocket divided into multiple compartments
Fabrication: 210g 80/20 Poly cotton

Branding:

E

SP

HP

Iris Pinafore - Regular Fit

Sizes	S/M	L/XL	2XL/3XL	4XL/5XL
1/2 Chest (cm)	38	48	58	68



Black



Navy



Khaki



White





DS-DAI - DAISY DRESS

Features: Notches on neckline • Grown on button stand • Princess panels • Slanted pockets • Comfortable for any work • Belt loop and button on the shoulders for detachable epaulettes • Epaulettes not supplied • Contrast piping on the neck, sleeves and pockets

Fabrication: 175g 100% Polyester

Branding:

E **SP** **HP**

Daisy Dress - Regular Fit									
Sizes	XS	S	M	L	XL	2XL	3XL	4XL	5XL
1/2 Chest (cm)	41	45	49	53	57	61	65	69	73



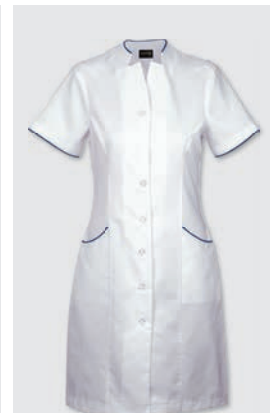
Black/White



Navy/White



Khaki/Black



White/Navy



PROTECTIVE OUTERWEAR



R-ELE - ELEMENT RAIN SUIT

Features: Jacket with fold away hood, storm flap and plastic studs • Front storm flap with zip opening and plastic studs • Adjustable plastic studs on sleeve and trouser hem
Reflective tape on chest, elbows and knees for high visibility • Elasticated waist on trousers • Trousers have adjustable plastic studs on hem • Two side entries for pocket access on pants

Fabrication: Polyester PVC coated fabric

Branding:

SP

NEW

Rain Suit - Regular Fit								
Sizes	S	M	L	XL	2XL	3XL	4XL	5XL
Jacket Sizes	36	38	40/42	44	46/48	50	52/54	56/58
½ Chest (cm)	57	61	65	69	73	77	81	85
Waist (cm)	76-91	81-96	85-101	91-106	96-111	101-116	106-121	111-128



Safety Yellow/Reflect



Navy/Reflect



Yellow



Navy

CON-R - CONTRACT RAIN SUIT

Features: Rain jacket with two front patch pockets • Elasticated cuffs and storm flap
• Trousers have an elasticated waist and double top-stitching throughout
• Heat sealed seams

Fabrication: 100% Waterproof Polyester PVC coated fabric

Branding:

SP

Rain Suit - Regular Fit								
Sizes	S	M	L	XL	2XL	3XL	4XL	5XL
Jacket Sizes	36	38	40/42	46/48	46/48	50	52/54	56/58
½ Chest (cm)	64.5	66	67.5	69	70.5	72	73.5	75
Waist (cm)	68-81	72-85	76-89	80-93	84-97	88-101	92-105	96-109



Navy



CON-RC - CONTRACT RAIN COAT

Features: Raglan sleeve styling • Open sleeve • Press stud front • Double top-stitching throughout • Hood with adjustable draw cord • Heat sealed seams

Fabrication: 100% Waterproof Polyester PVC coated fabric

Branding:

SP

Rain Coat - Regular Fit								
Sizes	S	M	L	XL	2XL	3XL	4XL	5XL
Jacket Sizes	36	38	40/42	46/48	46/48	50	52/54	56/58
½ Chest (cm)	64.5	66	67.5	69	70.5	72	73.5	75



CON-RR - CONTRACT REFLECTIVE RAIN SUIT

Features: Rain jacket with two front patch pockets • Elasticated cuffs and storm flap • Reflective tape across torso, back and knees • Trousers have an elasticated waist and double top-stitching throughout • Heat sealed seams • Safety yellow is a new colourway
Fabrication: 100% Waterproof Polyester PVC coated fabric

Branding:

SP

Rain Suit - Regular Fit								
Sizes	S	M	L	XL	2XL	3XL	4XL	5XL
Jacket Sizes	36	38	40/42	46/48	46/48	50	52/54	56/58
½ Chest (cm)	64.5	66	67.5	69	70.5	72	73.5	75
Waist (cm)	68-81	72-85	76-89	80-93	82-97	88-101	92-105	96-109



Safety Yellow/Reflect



Yellow/Reflect



Safety Orange/Reflect



Navy/Reflect





WEL-TO - WELLINGTON THERMAL TOP

Features: Self-fabric neckline binding with twin needle stitching • Interlock fabric for comfort and warmth • Easy to wear under clothing • Self fabric sleeve cuffs

Fabrication: 220g 100% Cotton Interlock fabric

Branding:

E

HP

SP

NEW

Tapered fit

Sizes	S	M	L	XL	2XL	3XL	4XL	5XL
½ Chest (cm)	45	48	50	54	59	63	67	70



Black



White



Black



White

WEL-PA - WELLINGTON THERMAL PANTS

Features: Grown-on elasticated waistband • Fly panel with opening • Self fabric leg cuffs • Interlock fabric for comfort and warmth • Gusset at crotch

Fabrication: 220g 100% Cotton Interlock fabric

Branding:

E

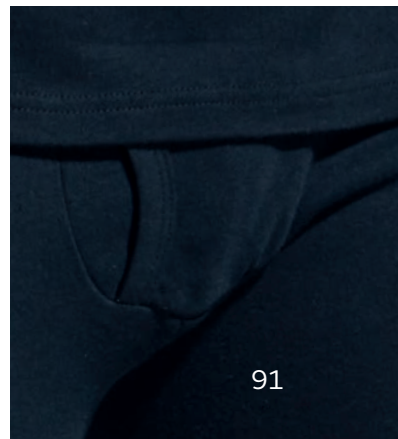
HP

SP

NEW

Tapered fit

Pants	S	M	L	XL	2XL	3XL	4XL	5XL
½ Waist Extended	45	49	53	57	60	64	68	70





ON SECURITY

A security officer needs to be easily identifiable, that's why security has all the staples that let people know your team is **ON** the scene and **ON** the lookout.



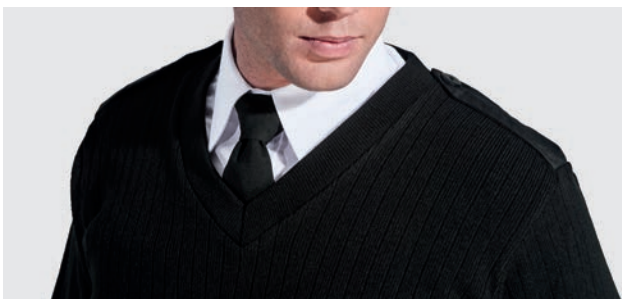
SECURITY 



Navy



Black



SEC-LS- SECURITY JERSEY

Features: 10 Gauge Needle Knit • Woven elbow patches and epaulettes

• Available only in long sleeves

Fabrication: 100% Acrylic

Branding:

E

BARRON Jersey - Tapered Fit

Sizes	S	M	L	XL	XXL	XXXL	4XL	5XL
1/2 Chest (cm)	48	51	54	57	60	63	66	69

LO-CON - CONTRACT COMBAT SHIRT

Features: Two front chest pockets with box pleats and flap with button • Shoulder epaulettes with buttons • Revere collar and front pintucks • Bartacked at stress points for added durability

• Available in short sleeves • Khaki is a new colourway

Fabrication: 210g 80/20 Poly Cotton Twill

Branding:

E **SP** **HP**

Mens Combat Shirt - Regular Fit								
Sizes	S	M	L	XL	2XL	3XL	4XL	5XL
1/2 Chest (cm)	51	56	61	66	71	76	81	86



Khaki



Olive



Navy



Black

PA-CON - CONTRACT COMBAT TROUSER

Features: Pintucks down front of legs • Half elasticated waistband • Triple needle stitching on inner legs for added durability • Functional side leg pocket with flap and button • Khaki is a new colourway

Fabrication: 210g 80/20 Poly Cotton Twill

Branding:

E

Contract Combat Trousers - Regular Fit									
Sizes (cm)	XS	S	M	L	XL	2XL	3XL	4XL	5XL
Waist extended	82	92	102	112	122	132	142	152	162



Olive



Navy



Black



Khaki



LO-FID - FIDELITY COMBAT SHIRT

Features: Back neck yoke • Button down epaulettes • Short sleeve combat shirt • Two front pockets with button closure as well as epaulettes • Notched neck collar • Single top-stitched shoulder seam for added strength • Bar-tacked pressure points

Fabrication: 200g 80/20 Poly Cotton fabric

Branding:

E

Mens Combat Shirt - Regular Fit

Sizes	S	M	L	XL	2XL	3XL	4XL	5XL
1/2 Chest (cm)	52	57	62	67	72	77	82	87



Black



Navy

LO-FID - FIDELITY COMBAT TROUSER

Features: Bar-tacks on all stress points • Top-stitched back and front rise • Flat front security trouser • Pin tuck detail • Double top-stitched inner leg for added durability • Two side pockets • Wide belt loops • One back pocket with Velcro closure • Elasticated hem and mock cargo pockets

Fabrication: 200g 80/20 Poly Cotton fabric

Branding:

E

BARRON Pants - Regular Fit

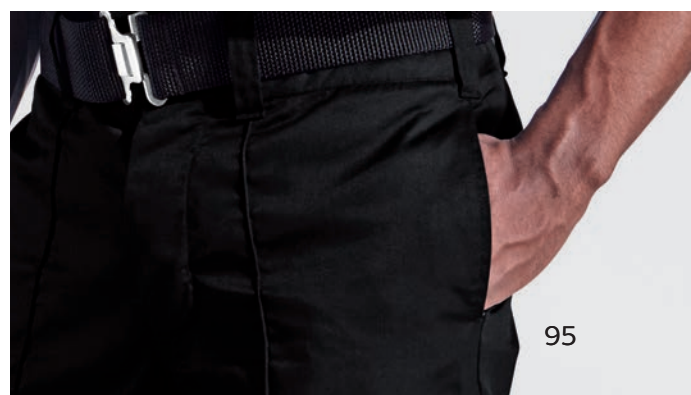
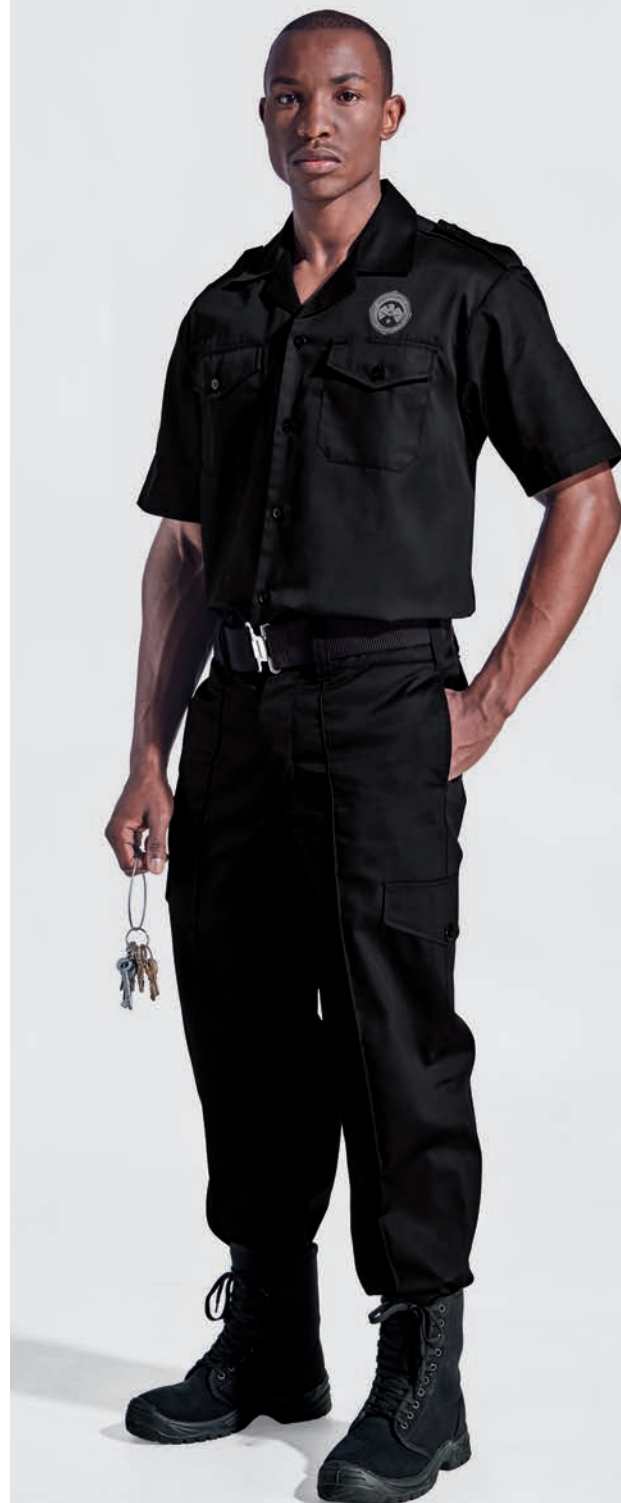
Sizes	2XS	XS	S	M	L	XL	2XL	3XL	4XL	5XL	6XL	7XL
Waist (Inches)	28	30	32	34	36	38	40	42	44	46	48	50
1/2 Waist (cm)	36	38.5	41	43.5	46	48.5	51	53.5	56	58.5	61	63.5



Black



Navy





LO-PIL - PILOT SHIRT

Features: Single top-stitched armholes and shoulder seams • Epaulettes • Two chest pockets with flaps • Pen slot in the left pocket • Double back yoke with box pleat • Constructed button stand

• Curved hemline • Long and short sleeve options

Fabrication: Easy care Poly Cotton fabric

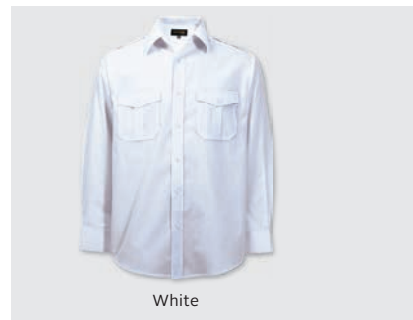
Branding:

E **SP** **HP**

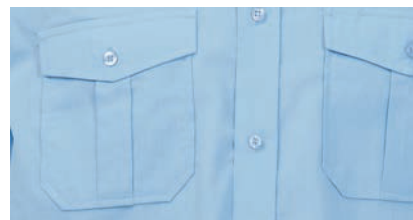
Mens Lounge Shirt - Regular Fit								
Sizes	S	M	L	XL	2XL	3XL	4XL	5XL
Collar	38	40	42	44	46	48	50	52
1/2 Chest (cm)	52	57	62	67	72	77	82	87



Sky



White



PA-WIN - WINSTON TROUSERS

Features: Two front slanted pockets • Branded inner waistband trim • Two back jet pockets

• Classic pleated front • Perfect for security industry

Fabrication: 190g 65/35 Poly Viscose

Branding:

E **SP** **HP**

NEW

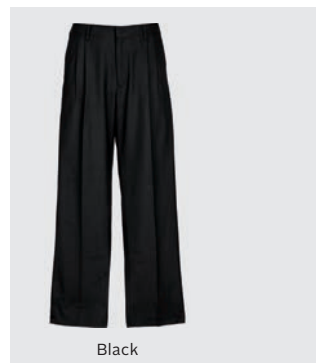
BARRON Pants - Regular Fit										
Sizes	2XS	XS	S	M	L	XL	2XL	3XL	4XL	5XL
Waist (inches)	28	30	32	34	36	38	40	42	44	46
1/2 Waist (cm)	37	39,5	42	44,5	47	49,5	52	54,5	57	59,5



Navy



Charcoal Heather



Black

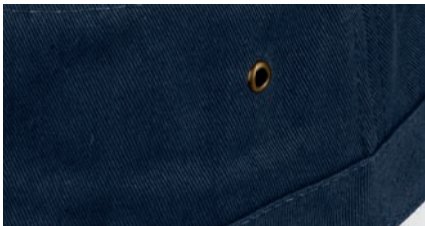




HW012 - CASTRO CAP

Features: Metallic eyelets • Buckle and tuck-in turn closure
Fabrication: Cotton Twill fabric
Branding:

E SP HP



SECURITY

HW066 - TRIGGER CAP

Features: Pre-curved peak • Velcro closure
Fabric: 100% Cotton Twill
Branding:

E SP HP

NEW





LL-PLA - LADIES BASIC POLY COTTON BLOUSE

Features: Dropped shoulder • Front and back waist darts • Side slits
• Constructed button stand • Button-through gauntlet • Shaped hem
• Feminine fit • Available in long and short sleeves

Fabrication: 65/35 Poly Cotton fabric

Branding:

E

Ladies Blouse - Regular Fit								
Sizes	S	M	L	XL	2XL	3XL	4XL	5XL
1/2 Chest (cm)	45	49	53	57	61	65	69	73



Sky Blue



White



Red



Black

LBK-CAR - LADIES BASIC CARDIGAN

Features: Classic styling • Button-up cardigan • Ribbed neckline • Shaped side seams
• Five tonal buttons • Ideal office wear

Fabrication: 100% Acrylic, 10 Gauge needle knit

Branding:

E

BARRON Cardigan - Regular Fit								
Sizes	S	M	L	XL	2XL	3XL	4XL	5XL
1/2 Chest (cm)	44	47	50	53	56	59	62	65



Navy



Black

L-SS - LADIES STATEMENT SKIRT

Features: Classic pencil styling • Easy care garment • Chic back slit • Fashionable corporate look • Ideal uniform element to go with many top options in the BARRON range • Constructed waistband with elasticated inserts in larger sizes

Fabrication: 100% Polyester

Branding:

E

BARRON Skirt - Regular Fit										
Sizes	2XS	XS	S	M	L	XL	2XL	3XL	4XL	5XL
Waist (Inches)	28	30	32	34	36	38	40	42	44	46
1/2 Waist (cm)	32.5	35	37.5	40	42.5	45	47.5	50	52.5	55



Navy



Black

BAR-JAC - BARRICADE JACKET

Features: Removable sleeves • Inner zip for embroidery access • ID Pocket • Removable sleeves • Welt side pocket • Chest pockets • Sleeve pocket • Ribbed hem and cuffs • Reinforced seams • Bar tacking finish on all pressure points for a high quality work wear garment • Water resistant coating • Contrast 220g micro fleece lining

Fabrication: 100% Coated Oxford Polyester

Branding:

E HP

BARRON Jacket - Regular Fit

Sizes	S	M	L	XL	2XL	3XL	4XL	5XL
1/2 Chest (cm)	58	62	66	70	74	78	82	86



Safety Orange



Black



Navy



Safety Yellow

**BEA-JAC - BEACON JACKET**

Features: Zip-off padded hood • Wind resistant • Robust jacket with quilted padding • Storm flap • Front chest pockets with studs • Two front pockets with double entry • Adjustable velcro tabs on the cuffs • Reflective tape for high-visibility • Designed to allow for easy embroidery access • Red is a new colourway

Fabrication: 100% Polyester outer with water-resistant finish

Branding:

E

BARRON Jacket - Regular Fit

Sizes	S	M	L	XL	2XL	3XL	4XL	5XL
1/2 Chest (cm)	56	60	64	68	72	76	80	84



Red



Black



Navy

SF004 - BARRON PROTECTOR BOOT

Features: Anti-static removable inner sole • Oil resistant • Slip resistant • Shock resistant • Durable shoe • Anti-static and oil resistant finish • Dual density PU sole

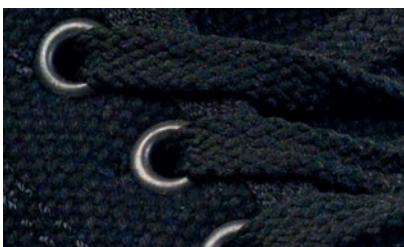
BARRON Protector Boot

Sizes

3 - 13



Black



SE-SOC - SECURITY SOCK

Features: Treated with Bio Guard to prevent the growth of odour forming bacteria • Bio Guard helps keep the socks fresher for longer • Relaxed Lycra welt inset for minimum leg pressure and maximum comfort • Reinforced heel and toe for extra durability

Fabrication: 60% Cotton / 39% Nylon / 1% Elastane

NEW

Security Sock

Sizes

One size fits all



Black



Navy

(B-W) WEB BELT

Features: Polyester webbing • Metal buckle closure • Adjustable size • Full length : 112cm

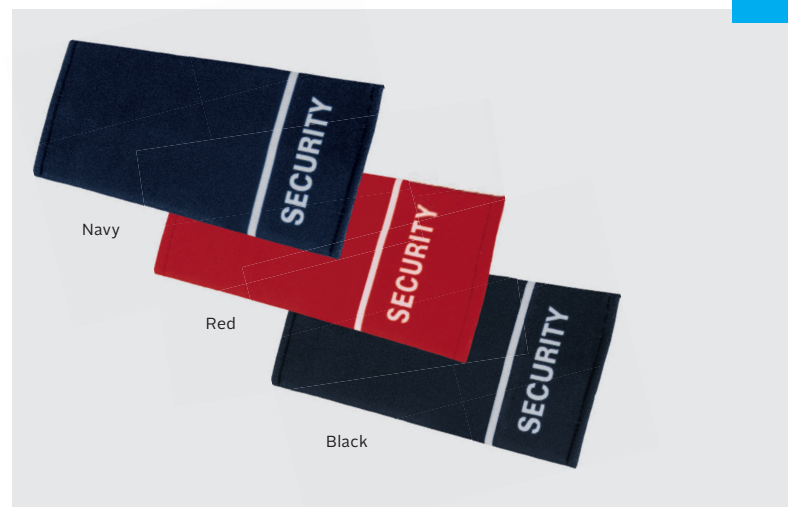
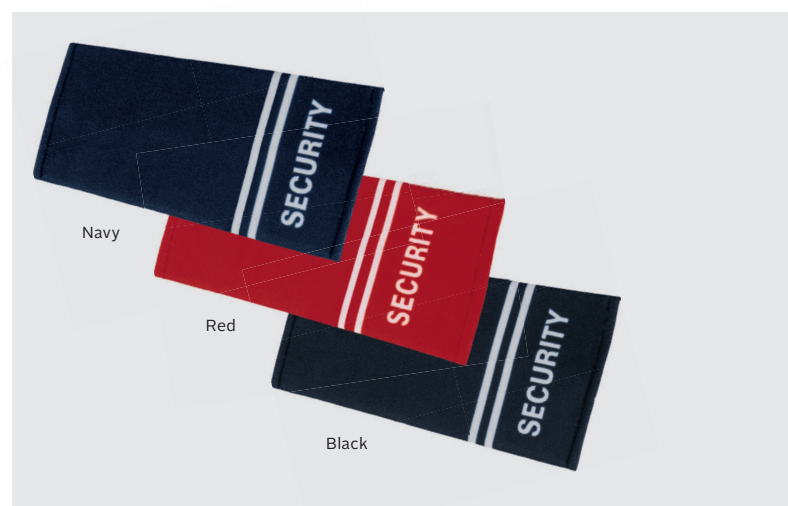


Navy



Black



EP-ONE - EPAULETTE ONE STRIPE**EP-TWO - EPAULETTE TWO STRIPE****EP-THR - EPAULETTE THREE STRIPE**

Features: Ideal for security industries • Sold in pairs of 10
 • Available in one, two or three stripes to distinguish rank
 • Sold with Security text printed directly onto epaulette

Fabrication: 100% Polyester

NEW**T-UN - UNIFORM TIE**

Features: Perfect tie for the office, security wear or special occasions

• Length: 146cm

Fabrication: 100% Polyester

Branding:

E**NEW**



ON

FOOT WEAR

Our Footwear offers tough, protective and rugged shoes and boots for every environment, so that dropping something on your foot isn't the end of the world.



Black

SF008 - BARRON OPTIMUS MINING BOOT

Features: Anti-static removable inner sole • Oil resistant • Slip resistant
• Shock resistant • Steel toe cap that can withstand impact of 200 joules • Reflective detail at back
• CE EN ISO20345: 2011 approved • Cemented rubber sole that can withstand up to 300°C degrees heat

BARRON Mining Boot	
Sizes	3 - 13

NEW



SF001 - BARRON DEFENDER SAFETY BOOT



SF001 - BARRON DEFENDER SAFETY BOOT

Features: SABS SANS 20345 approved safety boot • Anti-static easily removable inner sole • Oil resistant • Slip resistant • Shock resistant • This robust boot also has a steel toe cap with impact protection of 200 Joules • Heat resistant up to 90°C • Genuine leather upper and dual density PU sole

BARRON Defender Safety Boot	
Sizes	3 - 13



Black



SF002 - BARRON ARMOUR SAFETY SHOE

Features: SABS SANS 20345 approved safety shoe • Anti-static easily removable inner sole • Oil resistant • Slip resistant • Shock resistant • This durable shoe also has a steel toe cap with impact protection of 200 Joules • Heat resistant up to 90°C • Genuine leather upper and dual density PU sole

BARRON Armour Safety Shoe	
Sizes	2 - 13



Black



SF005 - BARRON CRUSADER SAFETY SHOE

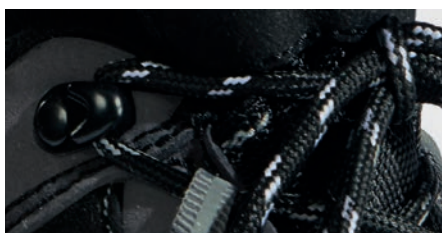
Features: CE EN ISO20345: 2011 approved safety shoe • Anti-static inner sole • Oil resistant • Slip resistant • Shock resistant • Reflective piping • Bullnose front • Double top-stitching • Suede backing at the inner heel • Steel toe cap with impact protection of 200 Joules • Heat resistant up to 90°C • Genuine upper leather, microfiber and PU/PU sole

BARRON Crusader Safety Shoe

Sizes 2 - 13



Black/Grey



Red/White



Black/White



Navy/White



White/White



SF006 - BARRON CANVAS LACE UP SHOE

Features: Slip resistant on dry surfaces • Rubberised toe cap • Rubberised sole • Twin-needle stitching • Metallic eyelets • Padded inner sole • Ideal for a working environment that doesn't require a steel toe cap • Casual enough to be used as a promo shoe • 100% Cotton canvas fabric • Red is a new colourway

BARRON Canvas Lace Up Shoe

Sizes 2 - 13

SF004 - BARRON PROTECTOR BOOT

Features: Anti-static removable inner sole • Oil resistant • Slip resistant • Shock resistant • Durable shoe • Anti-static and oil resistant finish • Dual density PU sole

BARRON Protector Boot	
Sizes	3 - 13



SF003 - BARRON CHELSEA SAFETY BOOT

Features: CE EN ISO20345: 2011 approved safety boot • Anti-static removable inner sole • Oil resistant • Slip resistant • Shock resistant • Steel toe cap with impact protection of 200 Joules • Heat resistant up to 90°C • Genuine leather upper and dual density PU sole

BARRON Chelsea Safety Boot	
Sizes	5 - 13

SF009 - BARRON LOAFER CLOG

Features: Slip on unisex clog design • Perfect for hospitality and medical field • Shock absorbent insole • Slip resistant on dry surfaces • Water resistant • Removable inner sole • Upper and outer sole – PVC • Insole – PU with Polyester Mesh • Thicker inner sole for added comfort

Branding:



NEW

BARRON Loafer Clog

Sizes

4 - 13



Black



Inner sole – PU with Polyester Mesh



SF007 - BARRON OCCUPATIONAL SHOE

Features: CE ISO20347: 2011 approved occupational lightweight shoe • Single density PU sole • Water resistant • Anti-static • Anti-slip • Anti-bacterial insole • Oil resistant • Unisex • Perfect for chefs, hospitals and front-line staff • Elasticated side panel • Microfiber upper and higher heel

BARRON Occupational Shoe

Sizes

2 - 13



Black



DELI-GUM - BARRON SHOVA DELI GUMBOOT

Features: CE EN 20347: 2012 OB FO SRA CLASS II approved • Wider foot shape for more comfort • The foot shape is compliant within SABS parameters • Ankle cups provides more support and eliminates ankle friction • Ankle support reinforces the achilles tendon area for additional support • Sole design with extra deep tread lugs to provide excellent grip on all terrain • Lower top band for ease while working • Sole foot bed with built-in foot shape • Anti-bacterial inner sock • Blood & Fat/Oil & acid resistant • 25 Part Nitrile content sole • Made from virgin PVC • REACH compliant • Sold in a box of 5

BARRON Shova Deli Gumboot	
Sizes	4 - 13



White/Grey

SHOV-CLOG - BARRON SHOVA CLOG

Features: CE EN 20347: 2012 OB FO SRA CLASS II approved • Made from Virgin PVC • Unisex PVC clog best for kitchens, hospitals and gardens • Anti-bacterial inner sock • Slip resistant inner sole • Blood & Fat/Oil & acid resistant • 25 Part Nitrile content sole • Sole design with extra deep tread lugs to provide excellent grip on all terrain • Wider foot shape for more comfort • The foot shape is compliant within SABS parameters • REACH compliant • Sold in a box of 5

BARRON Shova Clog	
Sizes	4 - 13



White/Grey



SHOSH-GUM - BARRON SHOSHOLLOZA MINING GUMBOOT

Features: CE EN 20345: 2011 SB SRA CLASS II approved • Made from PVC • Wider foot shape for more comfort • The foot shape is compliant within SABS parameters • Ankle cups provides more support and eliminates ankle friction • The ankle pad helps to stabilize, protect and support this area of the foot • Sole design with extra deep tread lugs to provide excellent grip on all terrain • Moulded wide fit metal toe cap, fully compliant with all international standards • Impact protection of 200 Joules and complies to EN12568 • Lower top band for ease while working • Sole foot bed with built-in foot shape • REACH compliant • Sold in a box of 5

BARRON Shosholoza Mining Boot

Sizes 3 - 14



Black/Black



XP-GUM - BARRON STIMELA XP GUMBOOT

Features: CE EN ISO 20345: 2011 SB + M • Upper made from Virgin PVC with 10% Nitrile

- The sole is made from 25% Nitrile • The sole is acid and oil resistant
- PVC upper designed for comfort behind the knee • Extra ankle support and protection
- Slip resistant sole • Extra shin protection • Fully integrated metatarsal protection
- It absorbs energy and disperses the energy over the sides of the boot • Impact protection of 100 Joules and complies to EN 20345 • Moulded wide fit metal toe cap, fully compliant with all international standards • Impact protection of 200 Joules and complies to EN12568
- Wider foot shape for more comfort • The foot shape is compliant within SABS parameters
- Energy absorption insole • REACH compliant • Sold in a box of 5

BARRON XP Stimela Gumboot

Sizes	4 - 13
-------	--------



Black/Grey



Black/Black

SHOV-GUM - BARRON SHOVA GENERAL PURPOSE GUMBOOT

Features: CE EN 20347: 2012 OB SRA CLASS II approved • Made from semi-recycled PVC

- Wider foot shape for more comfort • The foot shape is compliant within SABS parameters
- Ankle cups provides more support and eliminates ankle friction • Ankle support reinforces the achilles tendon area for additional support • Sole design with extra deep tread lugs to provide excellent grip on all terrain • Lower top band for ease while working • Sole foot bed with built-in foot shape • REACH compliant • Sold in a box of 5

BARRON Shova General Purpose Gumboot

Sizes	4 - 13
-------	--------

DU-SOC - DUTY SOCK

Features: Contrast heel and toe • Barron branding and size on sock
• Available in 2 sizes • Casual sock for everyday wear
Fabrication: Recycled Cotton/ Polyester/ Spandex

NEW

Duty Sock		
Sizes	6 - 8	9 - 12



Black



Navy



CO-SOC - COMMANDER SOCK

Features: Double cushion comfort sole • Anti-static silver coated cotton stripes are knitted into the sock • Treated with Odorguard for long-lasting freshness and antibacterial application
Fabrication: 70% Cotton / 26% Nylon / 2% Antistatic Silver / 2% Elastane

NEW

Duty Sock		
Sizes	6 - 8	9 - 12



Black



Navy



SE-SOC - SECURITY SOCK

Features: Treated with bioguard to prevent the growth of odour forming bacteria • Bioguard helps keep the socks fresher for longer • Relaxed Lycra welt inset for minimum leg pressure and maximum comfort • Reinforced heel and toe for extra durability
Fabrication: 60% Cotton / 39% Nylon / 1% Elastane

NEW

Security Sock	
Sizes	One size fits all



Black



Navy



DR-SOC - DRIFT MINING SOCK

Features: Available in 1 colour • Designed to keep miners and industrial workers cool and fresh • Socks are reinforced for durability and comfort • Tie back design
Fabrication: 70% Cotton / 28% Polyester / 2% Elastane

NEW

Drift Mining Sock	
Sizes	One size fits all



Natural Mélange





ON

ACCESSORIES

Switch your brand **ON** by adding an extra bit of branding with accessories to match your Workwear and make you look every bit the professional.

WA0001 - HARD HAT - SABS APPROVED

Features: SABS approved • Adjustable ratchet headband • Foam cushion front sweatband for added comfort • Chin strap anchor • 6 point inner • Pink, grey and sky available on request (minimum of 100 units)

Branding:

PP



Yellow



Royal



Sky



Grey



White



Orange



Green



Red



Pink



WA0002 - CHIN STRAPS (PACK OF 10)

Features: 2 Point webbing • Adjustable strap • Sold in packs of 10





WA20 - DUST MASKS - SABS APPROVED - FFP2 WITH VALVE

Features: FFP2 Dust Mask with valve • NRCS approved • 20 per box



White



White

20 per box

WA008/WA009 - DUST MASKS - SABS APPROVED

Features: SABS approved • WA008-FFP1 • WA009-FFP2 • 20 per box

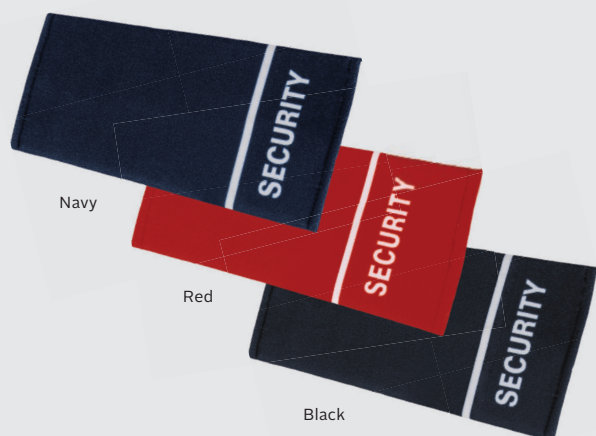


Black

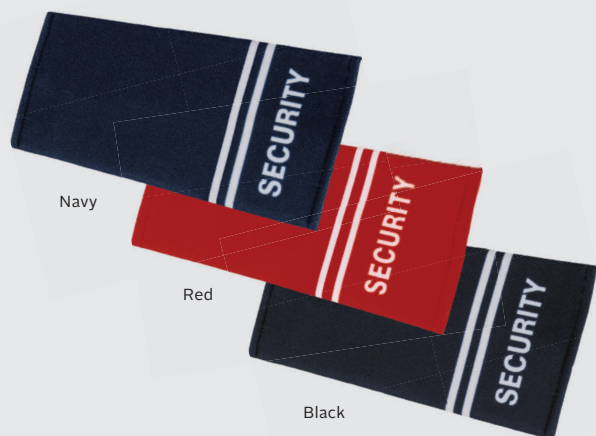
LB-WW - WORK WEAR BELT

Features: Genuine veg leather • Adjustable rivet for sizing adjustments • Tonal top stitching • Metal buckle • Available sizes: Small - X Large

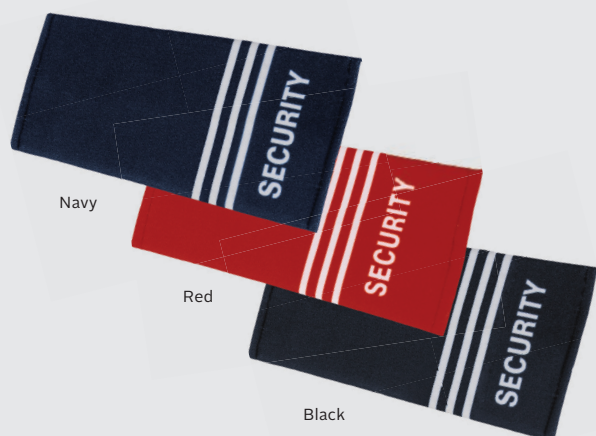
EP-ONE - EPAULETTE ONE STRIPE



EP-TWO - EPAULETTE TWO STRIPE



EP-THR - EPAULETTE THREE STRIPE



Features: Ideal for security industries • Sold in pairs of 10 • Available in one, two or three stripes to distinguish rank • Sold with Security text printed directly onto epaulette

Fabrication: 100% Polyester

NEW

PVC003 - RED PVC KNIT WRIST GLOVES

Features: Wrist length gloves • Sold 120 pairs in a box
• Available in Red only • One size fits all

Fabrication: PVC

NEW



T-UN - UNIFORM TIE

Features: Perfect tie for the office, security wear or special occasions • Length: 146cm

Fabrication: 100% Polyester

Branding:

E

NEW





Pale Blue



Black



Light Green

BT7279 - HEAD LAMP WITH 8 COB LED LIGHTS

Features: ABS Head lamp • 8 Powerful COB LED lights
• Adjustable head strap • Batteries included • Size: 5.5 x 4.1 x 4cm

Branding:

PP



BT0075 - 2 IN 1 FLASHLIGHT AND LAMP

Features: Size: 9 x 14cm • Retractable camping lamp • Front flashlight
• Removable carry strap • Includes batteries • ABS Construction

Branding:

PP DOME

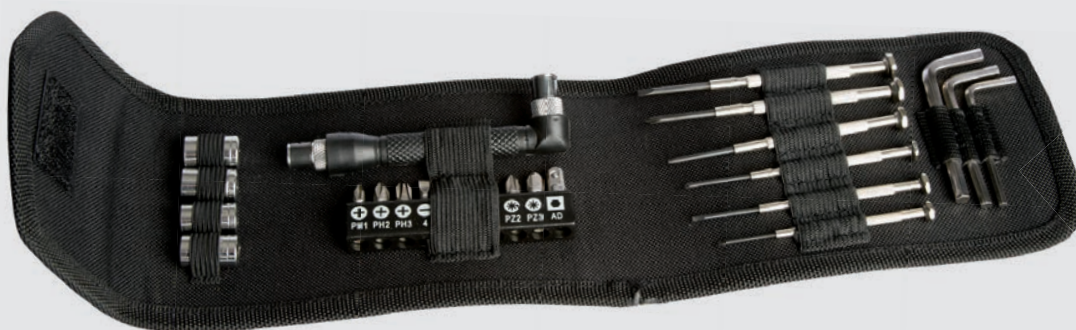


BT0070 - WATERPROOF LED FLASHLIGHT

Features: ABS Construction • Waterproof up to 50m • 3 Different light settings: low, high and flashing • Size: 14 x 4cm

Branding:

PP



BT0029 - 24PC TOOLKIT

Features: Size: 17 x 10.5cm (closed) • 4 Sockets • 9 Screwdriver bits and adapter • Rubber grip handle • 6 Screwdrivers • 3 Allen keys • 600D Nylon case

Branding:

DOME DS





SN0005 - SNUG 4 PORT USB HOME CHARGER

Features: • Input: 100V - 240V • Output: 5V/4.8A • Output 1: 1A • Output 2: 1A • Output 3: 2.4A • Output 4: 2.4A • Adapter for use with most mobile devices • Charge 4 USB devices • Quick charge • 1 Year warranty

Branding:

PP



SN0002 - SNUG QI WIRELESS CHARGING POWER BANK - 10000 MAH

Features: Size: 14.5 x 7 x 2cm • Input: 5V - 2.0A • Output 1: 5V - 2.1A • Output 2: 5V - 2.1A • Precise digital charge indicator • Two Universal USB ports • Provides up to four full charges • Premium soft touch finish • Charge 2 smartphones simultaneously • Compatible with all Qi enabled devices • Fast charging • 1 Year warranty

Branding:

PP DS



SN0014 - SNUG QUICK CHARGE 3.0 POWER BANK - 8000 MAH

Features: Size: 12.8 x 6.8 x 1.5cm • Powered by the latest portable battery technology • LCD Display showing the remaining charge left • Dual USB powerbank designed to charge most smartphones and tablets • Can charge two smartphones simultaneously • Micro USB charging cable included • Input: 5V-2.0A • Output 1: 5V-2.0A • Output 2: 5V-3.0A • Fully charges your phone up to 5 times • Fast charging • 1 Year warranty

Branding:

PP DD



SN0016 - SNUG QUICK CHARGE 3.0 POWER BANK - 15000 MAH

Features: Size: 14 x 6.8 x 2.1cm • Powered by the latest portable battery technology • LCD Display showing the remaining charge left • Dual USB powerbank designed to charge most smartphones and tablets • Can charge two smartphones simultaneously • Micro USB charging cable included • Input: 5V-2.0A • Output 1: 5V-2.0A • Output 2: 12V-1.5A • Fully charges your phone up to 10 times • Fast charging • 1 Year warranty

Branding:

PP DD



Black



Navy



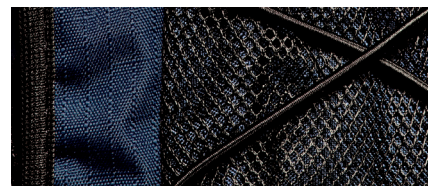
Grey



Navy



Black



IND104 - TOURISTA BACKPACK

Features: Extra strength 1680D Nylon • Carry handle • Zippered front pockets
• Main zippered compartment • Padded adjustable shoulder straps • Mesh side pockets
• Elasticated cord pullers • Grey is a new colourway • Size: 38 x 47 x 18cm

Branding:



IND108 - TRAILWALKER 2 BACKPACK

Features: Carabiner clip • Front zippered pockets • Rubberised carry handle
• Main zippered compartment • Padded adjustable shoulder straps • Elasticated cord pullers
• Mesh side pockets • Size: 31 x 49 x 16cm • Material: 600D Nylon, Dimple rubber base

Branding:



Grey



Black



BB0150 - HIGH VIS BACKPACK

Features: 600D X 300D Polyester and 600D Ripstop • Large zippered main compartment • Middle zippered compartment • Mesh side pockets • Padded carry handle • Padded adjustable shoulder straps • High visibility accents • Front zippered compartment • Size: 46.5 x 35 x 26.5cm

Branding:



IN0006 - ANTI-THEFT TECH BACKPACK

Features: 600D Polyester • Padded main zippered compartment • Anti-Theft board in front of the backpack which is cut proof • Padded laptop compartment • Padded accessory compartments • Back strap for carrying over trolley handles • Integrated charging port • Small concealed back zippered pocket • Padded carry handle • Padded adjustable shoulder straps • Padded back for comfort • Small side concealed zippered pockets • Size: 33 x 11 x 44cm

Branding:





BH6543 - 16 PIECE FIRST AID KIT IN EVA CASE

Features: Supplied in a EVA foam case • First aid kit: 1 sterile non-woven pad, 1 roll bandage, 1 triangle bandage, 2 safety pins, a pair of scissors, 4 alcohol pads, 5 adhesive sterile plasters, 1 small roll of tape • Size: 16.5 x 12.6 x 5.8cm

Branding:

SP



BH1342 - 16 PIECE FIRST AID KIT

Features: Size: 13 x 8.5 x 5cm • 16 Piece first aid kit • 600D Nylon pouch • Pre-printed first aid kit logo • First aid kit: • Pair of scissors • 5 Plasters (40 x 10mm) • 1 Flexible piece of fabric tape • 2 Plasters (70 x 18mm) • 1 Providone - Iodene prep pad • 1 Alcohol prep pad • 1 Wrapped gauze • 1 Roll of tape PBT • 1 Roll of gauze • 1 Roll of fabric tape • 1 Sling with 2 safety pins

Branding:

SP

DOMETAG



BT0074 - AUTO MULTIFUNCTIONAL EMERGENCY KIT

Features: Size: 28.6 x 7.6 x 16.2cm • 1 Pair of gloves • 1 Bit attachment • 1 Combination pliers • 1 Flathead screwdriver • 1 Phillips head screwdriver • 9 Sockets • 1 Tire pressure gauge • 1 Electrical tape • 6 Fuses • 6 Crimp ring terminal connectors • 2.2m Battery jumper cables • 1 Flashlight • 1 Whistle

Fabrication: PE Case

Branding:

DOMETAG

DS





ON BOTTOMS

Short, long, formal, casual or hardwearing – we have loads of work wear pants to create a lasting impression. Our range includes items for both men and women, for formal occasions, game lodge staff and shorts for those hot summer days.



Dark Blue



Black



Blue



BWJ - BARRON WORKWEAR JEANS

Features: Versatile jeans with timeless straight-leg styling • Ideal for everyday wear • Front and back pockets • Rivets on front pockets • Coin pocket • Metallic zip with stud button • Contrast stitching detail • Dark Blue is a new colourway
Fabrication: Cotton / Polyester / Rayon / Acrylic, 14 Oz
Branding:

E

BARRON Pants - Comfort Fit										
Sizes	2XS	XS	S	M	L	XL	2XL	3XL	4XL	5XL
Waist (Inches)	28	30	32	34	36	38	40	42	44	46
1/2 Waist (cm)	37.5	40	42.5	45	47.5	50	53.5	56.5	59.5	62





P-DEN - MENS ORIGINAL JEANS

Features: 5-Pocket Western-style • Classic and versatile jeans • Two back pockets
• Two shaped front pockets and a coin pocket • Studded detailing for strength completes the original styling

Fabrication: Enzyme washed Cotton rich denim fabric, 12.5 Oz

Branding:

E

BARRON Pants - Regular Fit										
Sizes	2XS	XS	S	M	L	XL	2XL	3XL	4XL	5XL
Waist (Inches)	28	30	32	34	36	38	40	42	44	46
1/2 Waist (cm)	36	38.5	41	43.5	46	48.5	51	53.5	56	58.5



P-RET - MENS RETRO JEANS

Features: Metallic zip with stud button • Pockets with rivets • 5-pocket Western-style jeans • Slight faded crease and subtle sandblast effect on the front panels
• This straight-leg style has double contrast stitching details

Fabrication: 55/45 Cotton Polyester fabric, 12.5 Oz

Branding:

E

BARRON Pants - Regular Fit										
Sizes	2XS	XS	S	M	L	XL	2XL	3XL	4XL	5XL
Waist (Inches)	28	30	32	34	36	38	40	42	44	46
1/2 Waist (cm)	36	38.5	41	43.5	46	48.5	51	53.5	56	58.5



BUN-DEN - BUNDU DENIM SHORTS

Features: 5-Pocket Western-style • Metallic front zip with shank closure
• Front and back pockets • Rivets on front pockets • Bartacks on all stress points

Fabrication: 11 Oz Cotton/Polyester/Viscose Denim

Branding:

E SP HP

Bundu Denim Shorts - Regular Fit										
Sizes	2XS	XS	S	M	L	XL	2XL	3XL	4XL	5XL
Waist (Inches)	28	30	32	34	36	38	40	42	44	46
1/2" Waist	35	37,5	40	42,5	45	47,5	50	52,5	55	57,5



Blue



PS-SAF - SAFARI SHORTS

Features: Constructed waistband, top stitched • Two back patch pockets double stitched
Fabrication: 240g 65/35 Poly Cotton fabric

Branding:

E **HP** **SP**

NEW

BARRON Pants - Regular fit										
Sizes	2XS	XS	S	M	L	XL	2XL	3XL	4XL	5XL
Waist (Inches)	28	30	32	34	36	38	40	42	44	46
½ Waist (cm)	35	37,5	40	42,5	45	47,5	50	52,5	55	57,5



Navy



Khaki



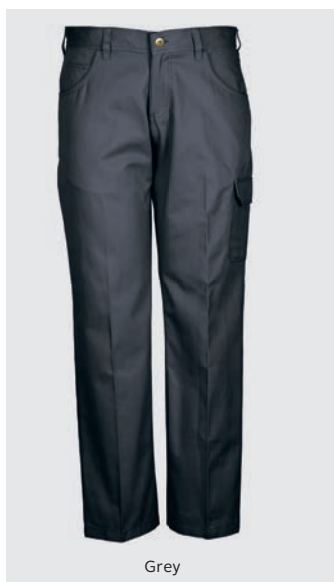
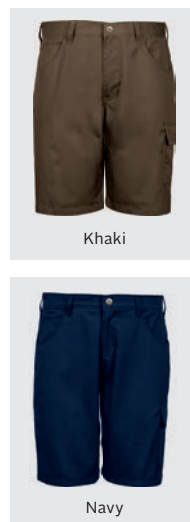
PS-ROG - ROGUE SHORTS

Features: Constructed waistband with belt-loops • Back patch pockets • Back yoke • Front fly with metal zip and shank • Curved pockets with a money pocket • A single patch pocket with flap • Hidden cell phone pocket on the side
Fabrication: Poly Cotton fabric

Branding:

E

BARRON Pants - Regular Fit											
Sizes	2XS	XS	S	M	L	XL	2XL	3XL	4XL	5XL	6XL
Waist (Inches)	28	30	32	34	36	38	40	42	44	46	48
½ Waist (cm)	37	39.5	42	44.5	47	49.5	52	54.5	57	59.5	62



PA-BRX - BRIXTON PANTS

Features: Constructed waistband with belt-loops • Back patch pockets, back yoke • Front fly with metal zip and shank • Curved pockets with a money pocket • A single patch pocket with flap and cell phone side pocket • Triple-needle stitching on back-rise and in leg

Fabrication: Poly Cotton twill fabric

Branding:

E

BARRON Pants - Regular Fit											
Sizes	2XS	XS	S	M	L	XL	2XL	3XL	4XL	5XL	6XL
Waist (Inches)	28	30	32	34	36	38	40	42	44	46	48
½ Waist (cm)	37.5	40	42.5	45	47.5	50	52.5	55	57.5	60	62.5

PA-COR - INDESTRUKTIBLE CORPORAL PANTS

Features: Utility style trousers • Side leg bellow pockets with flap and velcro • Slanted hip pockets with loop and D-ring detail • Metal shank and zip closure • Heavy double top stitch detail • Bartacks at stress points • Knee panel with dart detail • Back pockets with flap and velcro • INDESTRUKTIBLE branding

Fabrication: 280g 100% Cotton

Branding:

E **HP** **SP**



NEW

Regular fit											
Sizes	2XS	XS	S	M	L	XL	2XL	3XL	4XL	5XL	6XL
Waist (Inches)	28	30	32	34	36	38	40	42	44	46	48
1/2 Waist (cm)	37.5	40	42.5	45	47.5	50	52.5	55	57.5	60	62.5



Navy



Stone



Moss



Kalahari



Navy



Sand



Black



PA-CAR - CARGO PANTS

Features: Rugged cargo look • For everything from the great outdoors to the office • Triple-stitched back rise • Right side hammer-loop • Bar-tacking on all the of pressure points • Deep front pockets • Side and back pockets with flaps, and concealed studs

Fabrication: 270g 100% Cotton canvas fabric, Enzyme washed

Branding:

E

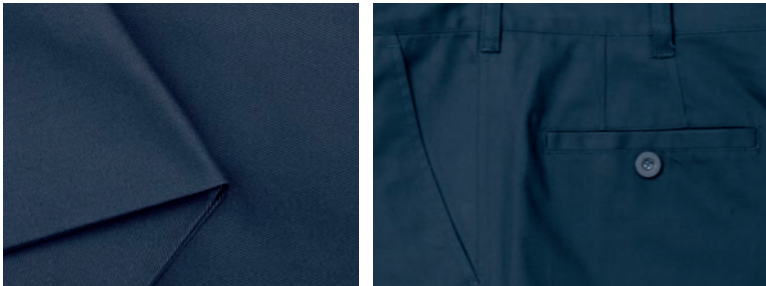
BARRON Pants - Regular Fit										
Sizes	2XS	XS	S	M	L	XL	2XL	3XL	4XL	5XL
Waist (Inches)	28	30	32	34	36	38	40	42	44	46
1/2 Waist (cm)	37	39.5	42	44.5	47	49.5	52	54.5	57	59.5

PA-UCH - POLY COTTON CHINO

Features: Easy care garment • Durable and classic • Semi-formal loop • Top-stitched for added durability • Blended fabric resists creasing and holds colour • Classic pleated chino styling with turn-ups
Fabrication: 245g Non-crease blended Poly Cotton fabric
Branding:

E

BARRON Pants - Regular Fit										
Sizes	2XS	XS	S	M	L	XL	2XL	3XL	4XL	5XL
Waist (Inches)	28	30	32	34	36	38	40	42	44	46
½ Waist (cm)	37	39.5	42	44.5	47	49.5	52	54.5	57	59.5



PA-CHI - COTTON CHINO

Features: Classic and versatile pleated chino trousers • Constructed waistband • Pleated front • Top-stitching for added durability • Hem with turn-ups
Fabrication: 225g 100% Cotton twill fabric
Branding:

E

BARRON Pants - Regular Fit										
Sizes	2XS	XS	S	M	L	XL	2XL	3XL	4XL	5XL
Waist (Inches)	28	30	32	34	36	38	40	42	44	46
½ Waist (cm)	37	39.5	42	44.5	47	49.5	52	54.5	57	59.5





PA-5CH - 5 POCKET CHINO

Features: Flat front, no turn-ups • Relaxed 5-pocket jeans style • Double-stitched pockets

• Rivets and a YKK metal zipper

Fabrication: 245g 65/35 Brushed Poly Cotton twill fabric

Branding:

E

BARRON Pants - Regular Fit										
Sizes	2XS	XS	S	M	L	XL	2XL	3XL	4XL	5XL
Waist (Inches)	28	30	32	34	36	38	40	42	44	46
1/2 Waist (cm)	37	39.5	42	44.5	47	49.5	52	54.5	57	59.5



PA-WIN - WINSTON TROUSERS

Features: Two front slanted pockets • Branded inner waistband trim

• Two back jet pockets • Classic pleated front • Perfect for security industry

Fabrication: 190g 65/35 Poly Viscose

Branding:

E

SP

HP

NEW

BARRON Pants - Regular fit										
Sizes	2XS	XS	S	M	L	XL	2XL	3XL	4XL	5XL
Waist (inches)	28	30	32	34	36	38	40	42	44	46
1/2 Waist (cm)	37	39,5	42	44,5	47	49,5	52	54,5	57	59,5



PA-CLA - MENS STATEMENT CLASSIC PANTS

Features: Durable fabric • Front pleated styling • Easy care garment • Classic trousers ideal for uniform and everyday use • Two front and back pockets • Constructed waistband • Turn-ups

Fabrication: 100% Polyester

Branding:

E

BARRON Pants - Regular Fit										
Sizes	2XS	XS	S	M	L	XL	2XL	3XL	4XL	5XL
Waist (Inches)	28	30	32	34	36	38	40	42	44	46
1/2 Waist (cm)	37	39.5	42	44.5	47	49.5	52	54.5	57	59.5



Navy



Black



Navy



Black



L-SS - LADIES STATEMENT SKIRT

Features: Classic pencil styling • Easy care garment • Chic back slit • Fashionable corporate look • Ideal uniform element to go with many top options in the BARRON range • Constructed waistband with elasticated inserts in larger sizes

Fabrication: 100% Polyester

Branding:

E

BARRON Skirt - Regular Fit										
Sizes	2XS	XS	S	M	L	XL	2XL	3XL	4XL	5XL
Waist (Inches)	28	30	32	34	36	38	40	42	44	46
1/2 Waist (cm)	32.5	35	37.5	40	42.5	45	47.5	50	52.5	55

LP-SS - LADIES STATEMENT STRETCH PANTS

Features: Stretch for comfortable fit • Easy care garment • Flattering ladies' trousers • Feminine flared leg styling • Slightly lower waistband with one button

Fabrication: Poly / Rayon / Spandex blended fabric

Branding:

E

BARRON Ladies Pants - Regular Fit

Sizes	XS	S	M	L	XL	2XL	3XL	4XL	5XL
Waist (Inches)	30	32	34	36	38	40	42	44	46
1/2 Waist (cm)	37	39	41	43.5	46	49	52	55.5	59



Navy



Black



LSP-CHI - LADIES STRETCH CHINO PANTS

Features: Classic 5 pocket styling • Stretch fabric for comfortable fit • Front curved pockets with money pocket • Metallic zip, rivet and shank • Belt loop detail with bar-tacks • Bar-tacks at stresspoints

Fabrication: 220g, 70% Cotton, 27% Polyester and 3% Spandex

Branding:

E

BARRON Ladies Pants - Regular Fit

Sizes	2XS	XS	S	M	L	XL	2XL	3XL	4XL	5XL
Waist (Inches)	28	30	32	34	36	38	40	42	44	46
1/2 Waist (cm)	35	37	39	41	43.5	46	49	52	55.5	59



Navy



Black



Stone



132





LP-AM - LADIES AMBER PANTS

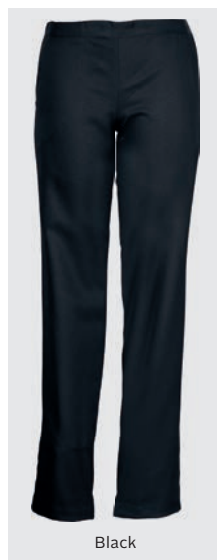
Features: Constructed front waistband • Back elasticated waistband • Classic pull on styling

• Front slanted pockets
Fabrication: 175g 100% Polyester

Branding:

E **SP** **HP**

BARRON Ladies Pants - Regular Fit									
Sizes	XS	S	M	L	XL	2XL	3XL	4XL	5XL
Waist (Inches)	30	32	34	36	38	40	42	44	46
½ Waist (cm)	37-43	39.5-47.5	42-50	44.5-52.5	47-55	49.5-57.5	52-60	54.5-62.5	57-65



Black



Navy



LP-EVE - LADIES EVE STRETCH JEANS

Features: Straight-leg • Flattering fit • Stretch fabric • Perfect for any body type • Two front curved pockets with a money pocket • Constructed waistband • Back pockets with profile stitching • Metallic zip opening • Rivets are added at all stress points for durability

Fabrication: 86/11/3 Cotton Polyester Lycra fabric

Branding:

E

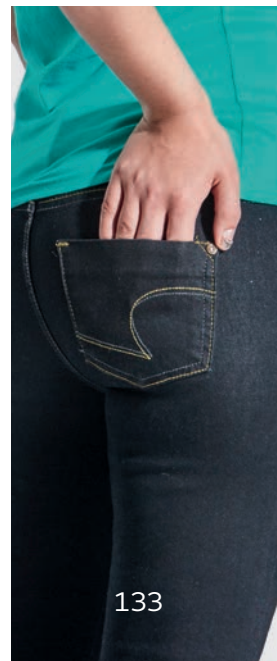
BARRON Ladies Pants - Regular Fit										
Sizes	2XS	XS	S	M	L	XL	2XL	3XL	4XL	5XL
Waist (Inches)	28	30	32	34	36	38	40	42	44	46
½ Waist (cm)	35	37	39	41	43.5	46	49	52	55.5	59



Black



Blue



A man with short dark hair and a light beard is looking through a pair of silver and black binoculars. He is wearing a short-sleeved camouflage shirt with a pattern of green, brown, and black. The background is a lush green forest with sunlight filtering through the trees. The text 'ON' is in large orange letters, underlined, and 'OUTDOOR & LEISURE' is in large white letters below it.

ON OUTDOOR & LEISURE

Our uniforms are created to ensure every garment delivers a consistent brand image no matter the working environment. For company retreats, team building activities or those hardworking game rangers **ON** safari - we've designed a range tough enough to withstand the African bush and stylish enough to wear anywhere.



Camo



LO-SNI - INDESTRUKTIBLE SNIPER BUSH SHIRT

Features: Camo printed bush shirt style • Front yoke, double stitched
• Tortoise shell plastic buttons • Front patch pockets with pocket flap and button
Fabrication: 160g 100% Cotton Twill

Branding:

E **SP** **HP**


INDESTRUKTIBLE

NEW

Regular fit								
Sizes	S	M	L	XL	2XL	3XL	4XL	5XL
Collar	38	40	42	44	46	48	50	52
½ Chest (cm)	52	57	62	67	72	77	82	87



Camo



TAR-JAC - INDESTRUKTIBLE TARGET BODYWARMER

Features: Funnel collar with edge stitching • Front Nylon zip with storm flap and press stud closure • Fully padded and quilted jacket with lining • Front jet side pockets with Nylon zip • Inner patch pocket • Contrast stretch binding on armholes

Fabrication: 160g 100% Cotton Twill

Branding:



Mens Jacket - Unisex Fit

Sizes	S	M	L	XL	2XL	3XL	4XL	5XL
½ Chest (cm)	54.5	58	61.5	65	68.5	72	75.5	79



Camo



BUL-JAC - INDESTRUKTIBLE BULLET JACKET

Features: Fully padded and fully lined • Funnel collar with zip off hood • Front Nylon zip with storm flap and press stud closure • Back yoke • Front bellow pockets with zip and press stud closure • Front slanted chest pockets with Nylon zips • Contrast rib inserts at inner cuff • Half elasticated sleeve cuff with adjustable tab
• Embroidery access

Fabrication: 160g 100% Cotton Twill

Branding:



Mens Jacket - Regular Fit								
Sizes	S	M	L	XL	2XL	3XL	4XL	5XL
½ Chest (cm)	56	60	64	68	72	76	80	84



Camo

HW059 - IMPALA VISOR

Features: Pre-curved peak • Velcro closure
Fabrication: Printed Poly Cotton Twill fabric

Branding:

E

HP



HW058 - 6 PANEL BUFFALO CAP

Features: Structured 6 panel • Pre-curved peak

• Velcro closure • Low profile

Fabric: Printed Poly Cotton Twill fabric

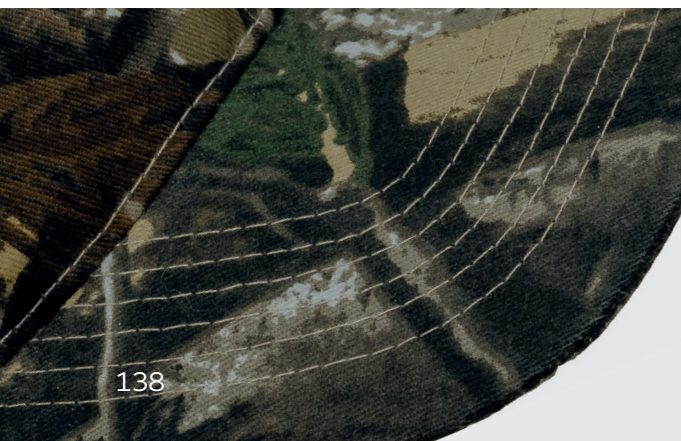
Branding:

E

HP



Camo





Navy



Black



DRI-JAC - INDESTRUKTIBLE DRILL JACKET

Features: Fully lined and padded jacket • Heavy thread double stitching detail
Nylon zip at front opening • Zip pocket at right chest • Patch pockets with flap at chest
• Side welt pockets with press stud closure • INDESTRUKTIBLE branding
Fabrication: 230g 100% Polyester Twill outer

Branding:



NEW

Regular fit								
Sizes	S	M	L	XL	2XL	3XL	4XL	5XL
½ Chest (cm)	56	60	64	68	72	76	80	84



Navy



Black

**MI-ALL - INDESTRUKTIBLE ALLIANCE FLEECE JACKET**

Features: Heavy weight bonded fleece style • Reflective detail at shoulders and back yoke • Woven fabric panel detail on sleeves, collar, front and back yoke
 • Tonal nylon zip at front opening • Tonal nylon zip pocket at right wearing chest
 • INDESTRUKTIBLE branding • Elasticated binding detail at hem and sleeves
Fabrication: 345g 100% Polyester Bonded Fleece

NEW**Branding:****INDESTRUKTIBLE**

Comfort fit								
Sizes	S	M	L	XL	2XL	3XL	4XL	5XL
½ Chest (cm)	57	60	63	66	69	72	75	78



Navy



Stone



LO-AMB - INDESTRUKTIBLE AMBUSH SHIRT

Features: Velcro tab at left wearing chest • Gunmetal buttons • Back vent with mesh insert for ventilation • Versatile roll up sleeve styling • INDESTRUKTIBLE branding • Left patch pocket has a box pleat with velcro flap • Left velcro flap pocket placed on patch pocket • Curved hemline • Heavy top stitching
Fabrication: 120g 100% Cotton

Branding:



NEW

Mens Lounge Shirt - Regular fit								
Sizes	S	M	L	XL	2XL	3XL	4XL	5XL
Collar	38	40	42	44	46	48	50	52
½ Chest (cm)	52	57	62	67	72	77	82	87



Black



Stone



Navy

**TAN - INDESTRUKTIBLE TANK GOLFER**

Features: Rib knit collar and cuffs • Gunmetal shank buttons • INDESTRUKTIBLE branding • Heavy top stitching • Drop shoulder seams • Chunky constructed placket • Loose pocket provided • Petersham detail at inner neck and at side slits

Fabrication: 65/35 Polycotton Pique Knit 200g

Branding:

**INDESTRUKTIBLE****NEW**

Easy fit

Sizes	S	M	L	XL	2XL	3XL	4XL	5XL
½ Chest (cm)	53	56.5	60	63.5	67	70.5	74	77.5



Stone



Kalahari



Charcoal



Navy



Navy



Stone



MB-TRK - MENS TRACKER SHIRT

Features: Lightweight and breathable • Bar-tacks at pressure points • Back vent with mesh insert for ventilation • Patch pockets with inverted pleats and velcro flaps on chest • Curved hem-line

Fabrication: 120g 100% Cotton

Branding:

E **SP** **HP**

Mens Lounge Shirt - Regular Fit

Sizes	S	M	L	XL	2XL	3XL	4XL	5XL
Collar	38	40	42	44	46	48	50	52
½ Chest (cm)	52	57	62	67	72	77	82	87

LB-TRK - LADIES TRACKER SHIRT

Features: Bar-tacks at pressure points • Back vent with mesh insert for ventilation • Two patch pockets with velcro flaps on chest • Front waist darts

• Curved hem-line • Sleeves with turn-ups • Flattering feminine outdoor look

Fabrication: 120g 100% Cotton

Branding:

E **SP** **HP**

Ladies Blouse - Regular Fit

Sizes	XS	S	M	L	XL	2XL	3XL	4XL	5XL
½ Chest (cm)	41	45	49	53	57	61	65	69	73

**LL-OUT - LADIES OUTBACK BLOUSE**

Features: Stylish ladies' fit with curved hem-line • Short sleeve roll-up sleeve styling • Flattering feminine outdoor look • Two front pockets • Back yoke detail • Tapered side seams • Tonal buttons are used throughout • Princess panels

Fabrication: 100% Cotton fabric

Branding:

E

Ladies Blouse - Regular Fit

Sizes	XS	S	M	L	XL	2XL	3XL	4XL	5XL
½ Chest (cm)	41	45	49	53	57	61	65	69	73



Khaki



Stone



Khaki



Granite



White



Stone

**LO-OUT - MENS OUTBACK SHIRT**

Features: Versatile roll-up sleeve styling • Mesh inner shoulder yoke • Two patch pockets with velcro flaps • Back yoke • Vents • Double button cuffs • Double top-stitched finishes • Eyelets on the pocket

Fabrication: 100% Cotton fabric

Branding:

E

Mens Lounge Shirt - Regular Fit

Sizes	S	M	L	XL	2XL	3XL	4XL	5XL
Collar	38	40	42	44	46	48	50	52
½ Chest (cm)	52	57	62	67	72	77	82	87



Stone



Stone



Dusk Blue

Airforce Blue

Navy



Safari

Kalahari

White

LO-BUSH - MENS PLAIN BUSH SHIRT

Features: Classic South African favourite • Two pleated pockets with flaps • Double-layer yoke with back box pleat • Double-needle finishing for strength and durability • Equipped with metallic buttons
Fabrication: 100% Cotton Twill fabric

Branding:

E

Mens Lounge Shirt - Regular Fit

Sizes	S	M	L	XL	2XL	3XL	4XL	5XL
Collar	38	40	42	44	46	48	50	52
½ Chest (cm)	52	57	62	67	72	77	82	87



Dusk Blue

Airforce Blue

Navy



Safari

White

LL-BUSH - LADIES PLAIN BUSH SHIRT

Features: Ladies' blouse with tapered side seams • Shaped panels for a feminine fit • Metal buttons • Two small chest pockets • Sleeves with turn-ups • Curved hem
Fabrication: 100% Cotton Twill fabric

Branding:

E

Ladies Blouse - Regular Fit

Sizes	S	M	L	XL	2XL	3XL	4XL	5XL
½ Chest (cm)	45	49	53	57	61	65	69	73



Navy



Stone



Stone



Safari



Navy



LLO-LBUSH - LADIES BUSH SHIRT LONG SLEEVE

Features: Ladies blouse with tapered side seams • Shaped panels for a feminine fit • Metal buttons • Two small chest pockets • Curved hem • Double needle finishing for strength and durability • Long sleeves with adjustable cuffs

Fabrication: 100% Cotton Twill fabric

Branding:

E

Ladies Blouse - Regular Fit								
Sizes	S	M	L	XL	2XL	3XL	4XL	5XL
½ Chest (cm)	45	49	53	57	61	65	69	73

LO-LBUSH - MENS BUSH LONG SLEEVE SHIRT

Features: Curved hem and double button cuffs • South African inspired lounge shirt • Two pleated pockets with flaps • Double-layer yoke with box pleat • Double-needle top-stitching throughout • Equipped with extra strength metallic buttons

Fabrication: 100% Cotton Twill fabric

Branding:

E

Mens Lounge Shirt - Regular Fit								
Sizes	S	M	L	XL	2XL	3XL	4XL	5XL
Collar	38	40	42	44	46	48	50	52
½ Chest (cm)	52	57	62	67	72	77	82	87



Stone/Safari



Stone/Airforce Blue

Black/Stone



Stone/Navy

Kalahari/Moss



Navy/Stone

Military Green/Stone

LO-BUSH - TWO TONE BUSH SHIRT

Features: Reinforced double-needle stitching • Classic South African favourite
• Includes two pleated pockets with flaps • Double-layer yoke with back box pleat
• Double-needle finishing for strength and durability

Fabrication: 100% Cotton Twill, durable fabric

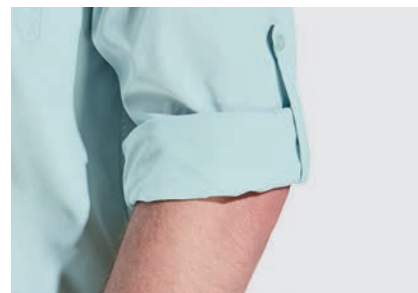
Branding:

E

Mens Lounge Shirt - Regular Fit								
Sizes	S	M	L	XL	2XL	3XL	4XL	5XL
Collar	38	40	42	44	46	48	50	52
½ Chest (cm)	52	57	62	67	72	77	82	87



Mountain Blue



Navy



Desert Tan



Fossil

LO-TR - MENS TRAIL SHIRT

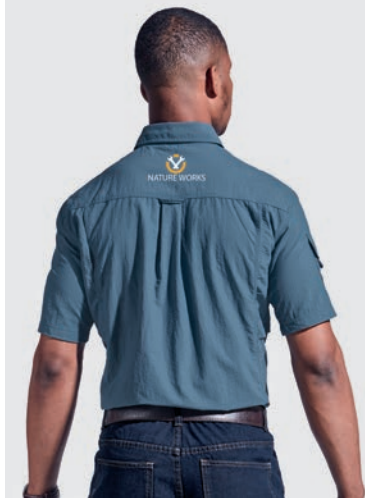
Features: Mesh inner back yoke • Easy care garment • Durable garment that is great for an active lifestyle or the outdoors • Chest pockets • Double button cuffs • Double-needle finish for extra strength and durability • Versatile roll-up sleeves styling • Breathable and water-resistant fabric

Fabrication: 100% Lightweight Nylon fabric

Branding:

E

Mens Lounge Shirt - Regular Fit								
Sizes	S	M	L	XL	2XL	3XL	4XL	5XL
Collar	38	40	42	44	46	48	50	52
½ Chest (cm)	52	57	62	67	72	77	82	87



Blue



Grey



Khaki



Navy

LO-DEL - DELTA SHIRT

Features: Bar-tacking on pressure points • Easy care garment • Versatile lightweight shirt
• Mesh back yoke • Underarm vents • Constructed placket • Patch pockets with velcro flaps on the chest and sleeve • Styled back yoke with box pleat • Double top-stitching throughout
Fabrication: 100% Nylon

Branding:

E

Mens Lounge Shirt - Regular Fit

Sizes	S	M	L	XL	2XL	3XL	4XL	5XL
Collar	38	40	42	44	46	48	50	52
½ Chest (cm)	52	57	62	67	72	77	82	87



Hunter's Green



Navy



Black



Stone

FI-JAC - FISHING JACKET

Features: Two chest pockets with subdivisions • Inner pockets with water protectors
• Zippered front pockets • Multi-purpose action garment • Full front zip
Fabrication: 100% Cotton Twill fabric

Branding:

E

SP

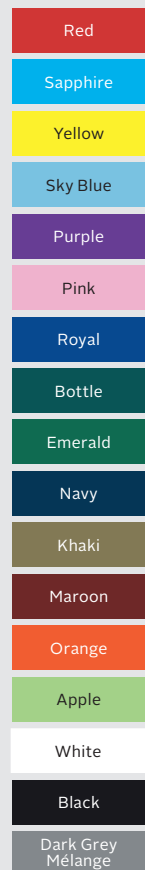
HP

Mens Jacket - Easy Fit

Sizes	S	M	L	XL	2XL	3XL	4XL	5XL
½ Chest (cm)	55	58	61	64	67	70	73	76



Available in

**TST145B - 145G BARRON CREW NECK T-SHIRT**

Features: Shoulder-to-shoulder seam taping for improved comfort and durability • Dyed with reactive dyes • Double top-stitched hem and sleeves • Double neck rib with top-stitching • Generous fit

Fabrication: 145g 100% Carded Cotton, Single Jersey Fabric

Branding:

T-Shirt - Comfort Fit								
Sizes	S	M	L	XL	2XL	3XL	4XL	5XL
½ Chest (cm)	51	54	57	60	63	66	69	72

**TSL145B - 145G LONG SLEEVE T-SHIRT**

Features: Double-needle finish on the sleeves and bottom hem • Shoulder-to-shoulder taping • Lycra-reinforced neck rib • Lightweight • Dyed with reactive dyes

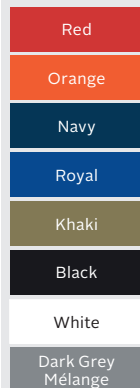
Fabrication: 145g 100% Carded Cotton, Single Jersey Fabric

Branding:

T-Shirt - Comfort Fit								
Sizes	S	M	L	XL	2XL	3XL	4XL	5XL
½ Chest (cm)	51	54	57	60	63	66	69	72



Available in



TST135B - 135G BARRON POLYESTER T-SHIRT

Features: Crew neckline • Double top-stitching on the hem and sleeves • Single-stitched self-fabric neck tape • Raglan single top-stitched sleeves • Generous fit
Fabrication: 135g 100% Polyester moisture management fabric: e-Dri

Branding:

E **HP**

T-Shirt - Comfort Fit									
Sizes	XS	S	M	L	XL	2XL	3XL	4XL	5XL
½ Chest (cm)	48	51	54	57	60	63	66	69	72



Available in

- Red
- Safety Orange
- Safety Yellow
- Lumo Green
- Blue
- Royal
- Navy
- White
- Black
- Bottle

TSL135B - 135G BARRON LONG SLEEVE POLYESTER T-SHIRT

Features: Crew neck T-Shirt • Raglan sleeves • Self-fabric neck tape • Generous cut • Double top-stitched hem • Lightweight • Ideal for sublimation print
Fabrication: 135g 100% Polyester moisture management fabric: e-Dri

Branding:

E **HP**

T-Shirt - Comfort Fit									
Sizes	XS	S	M	L	XL	2XL	3XL	4XL	5XL
½ Chest (cm)	48	51	54	57	60	63	66	69	72

Available in

- Red
- Safety Orange
- Safety Yellow
- Lumo Green
- Navy
- White
- Black





Available in

Royal
Navy
Black
Lime
Surf Blue
Pink
Orange
Emerald
Red
Grey
Khaki
Atlantic Blue
White
Yellow
Blue
Purple
Apple
Papaya
Military Green
Maroon
Ice Mélange
Jade
Bottle



Available in

Royal
Navy
Black
Lime
Surf Blue
Pink
Orange
Emerald
Red
Grey
Khaki
Atlantic Blue
White
Yellow
Blue

LAS-175B - 175G MENS BARRON PIQUÉ KNIT GOLFER

Features: Double-needle finish on sleeves and hem • BARRON trademark two ridge collar • Supplied with a loose pocket • Three button placket • Self-fabric neck tape on collar seam

Fabrication: 175g 65/35 Poly Cotton fabric with anti-pill finish

Branding:

E	SP	HP
---	----	----

Mens Golfer - Econo Fit									
Sizes	S	M	L	XL	2XL	3XL	4XL	5XL	
½ Chest (cm)	53	55.5	58	60.5	63	65.5	68	70.5	

L-175 - LADIES 175G BARRON PIQUÉ KNIT GOLFER

Features: BARRON trademark two ridge collar • Three button placket • Side slits • Set sleeves • Double-needle finish on sleeves and hem • Feminine fit • Purple is a new colourway

Fabrication: 175g 65/35 Poly Cotton fabric with anti-pill finish

Branding:

E	SP	HP
---	----	----

Ladies Golfer - Regular Fit									
Sizes	XS	S	M	L	XL	2XL	3XL	4XL	5XL
½ Chest (cm)	46	49	51.5	54	56.5	59	61.5	64	66.5

ON SITE

BRANDING FACILITY

MAKE IT YOURS



SAFETY FIRST

Reflective
Heat Transfer



ON
WORKWEAR

Embroidery



CBS
TRUCKING

Screen Print



Red Giant
Construction

Heat Transfer

